



Photographer: John Carter

Photographer: John Carter // Riders: Bjorn, Liam and Abby Dunsenfeld

STARBOARD

INNOVATION QUALITY

4102

Black Box Wave

- The unique light wind / mushy waves toy
- The board, not the sail, generates and holds speed on the wave
- What's new? New concept for a real-world conditions revolution

87
Carbon, Wood



PAGE 20

Quad Wave

- The rail-driven power wave board
- The most connected feel with the wave you can get
- What's new? New MorenoTwins Pro Model 67 and new 87 and 92 rocker

67, 70, 74, 77, 82, 87, 92, 100
Carbon, Wood



PAGE 24

NuEvo Wave

- The effortless and efficient surfer
- The closest to a true surf board in design, performance and feel
- What's new? Supersize models (101, 110) for everyday wavesailing. New 86 size. Faster 92 shape

73, 80, 86, 92, 101, 110
Carbon, Wood

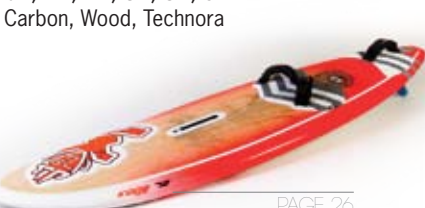


PAGE 22

Kode Wave

- Philip Koster's new generation, aerial-style wave boards
- Fast, speedy and powerful. Mixes new-school rotational and aerial wave-riding style
- What's new? New MorenoTwins Pro Model 67 and new lengths and rounder nose rails on the other models

67, 72, 77, 82, 87, 92
Carbon, Wood, Technora



PAGE 26

Kode Freestyle Wave

- The sharp, aggressive, fast and responsive wave-freestyle board
- The one-board quiver solution
- What's new? Shorter nose on the 86; Aerodynamic "bullet nose" for the 94 and 103

86, 94, 103
Carbon, Wood, Technora



PAGE 28

Flare Freestyle

- Most highly-rated freestyle board designed by the best freestyle team
- Fast, aggressive and compact yet comfortable and forgiving – it's the perfect balance!
- What's new? New ProKids 81 and shorter lengths and new shapes for the 91 and 101

81, 91, 101, 111
Carbon



PAGE 30

WAVE & FREESTYLE

iSonic Slalom

- The pure slalom board
- The icon of modern slalom – it has redefined the genre and continues to dominate PWA's slalom races.
- What's new? New shorter, slimmer and wider shapes for 2014: more planing, more control, more speed!

80, 87, 90, 97, 107, 110, 117, 130
Carbon, Wood



PAGE 34

UltraSonic Freerace

- The super-efficient, early planing slalom board
- Ultra planing starts in just 7 knots

147
Carbon, Wood



PAGE 36

iSonic Speed

- The speed needle
- Designed by Bjorn Dunkerbeck Carlos Sosa and Remi Vila for the W58 and new W44, it's the culmination of a 26 year R&D journey
- What's new? New W44 model designed for Namibia 2013.

W44, W49, W54, W58
Carbon



PAGE 36

Formula Course Racing

- The ultra high-tech course racing board
- Earliest planing capabilities and the widest wind range
- What's new? New shape for 2014/2015 season. Only one size, that replaces both sizes of 2012/2013.

167, 161 Experience One Design
Carbon, Tufskin AST (P.40)



PAGE 38

Phantom Raceboard

- The most advanced and most successful raceboards
- 8 of the Top 10 raceboards are Starboard (including 1st place)
- What's New? Thicker and more voluminous versions of the 295 and 377 for better light-wind performance

295 L, 377, 377 L
Carbon, Tufskin AST



PAGE 42

PAGE 44

RACING

Futura Freerace

- The most innovative freerace board
- Extra slim, deep deck concaves, mini-wingers and packed full of iSonic technology, it's the most advanced freerace board

93, 101, 111, 121, 131, 141
Carbon, Wood



PAGE 60

Carve Freeride

- Plug and play freeride
- Accessibility and fun like never before
- What's new? 8% slimmer again

111, 121, 131, 141, 151, 161
Carbon, Wood, Tufskin AST



PAGE 58

GO Freeride

- The original progressive all-round board
- Slim and wide for stability and wind range

111, 121, 131, 141, 151, 161, 171
Windsurfer
Tufskin EVA



PAGE 64

Kode Tufskin Entry/Freeride

- Dual concept board
- An entry-level board for kids and a fun freeride blaster for adults

113, 123, 137
Tufskin EVA



PAGE 62

AtomIQ Freeride

- The new generation freemove board
- Maneuverable, fun and fast with a huge wind range
- New concept for 2014

100, 110, 120
Carbon



BACK COVER

FREERIDE

WindSUP Inflatable

- The inflatable WindSUP Lighter, stronger and more compact than conventional boards
- What's new? New kids' size New fin boxes and fittings

9' x 30"/ 10' x 34"/ 11'2" x 32"/ 11'2" x 39"/ 12'6" x 30"
Deluxe, Fun



PAGE 52

WindSUP

- The board for SUPing and windsurfing: WindSUP
- Fastest growing category of windsurfing
- What's new? New ASAP models with polished blue rails New Summer board model New Freeride model

10'x34", 11'2"x30", 12'x32"
Wave special: 8'10"x32"
Summer board: 12'x36"
Freeride: 12'2"x30"
Kid's: 9'x30"

Tufskin EVA, A.S.A.P
A.S.A.P Blue



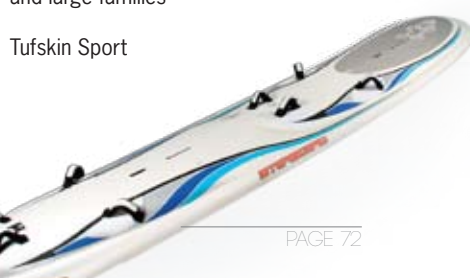
PAGE 48, 50

WindSUP

Gemini Tandem

- The wide-style tandem board
- The most fun and social board ever made. Ideal for clubs, schools, centers and large families

Tufskin Sport



PAGE 72

Rio Entry

- The entry-level and progressive board
- Easy to learn, glides fast and gets you to learn

S, M, L
Tufskin Armourtech
Tufskin Sport



PAGE 70

Start Entry

- The most stable entry-level board
- The World's easiest board to start windsurfing on

M, L
Tufskin EVA Red, Tufskin EVA Blue



PAGE 68

GETTING STARTED

FIND OUT HOW MUCH FUN IT IS.

Only 36 years ago our friends in Arendal Sailing club, Norway were discussing the future of windsurfing design. The general consensus was that it now would be challenging to improve windsurfing as the equipment already was so cool.



Local racing in Norway 1979.



Checking out The Phantom at The King's Cup 2012.



Loading my 350kg. of gear, Tenerife world cup 1993.

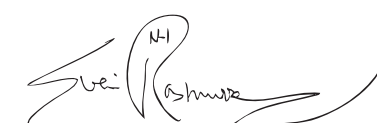


The Windsurfer One design had a great concept, so did the Mistral Competition and most other boards available offered exciting One Design racing.

I went on racing for another 16 years, The LA Olympics on the One design Windglider and then the Pro windsurfing tour thereafter. The gear however seemed to become better every year and by the time Starboard was started in 1994, windsurfing boards generally were said to be fantastic. Looking back at the last 19 years boards and rigs alike have however again taken several quantum leaps and some may again believe that it is challenging to improve future windsurfing?

The past however has the tendency of predicting the future and incredible improvements are sure to come. Our Pro team has been bringing home 5 out of 6 last PWA manufacturers titles, proving that futuristic gear of today indeed makes a difference even for the most skilled riders.

My race DNA also likes to establish who is the best rider, not only what gear is the most efficient. My feet have quite possibly tested more different board designs than any other windsurfer's feet over the years? Yet I would love to participate in local One Design races with the Phantom 295 L. This design sums up much of all the great stuff one looks for in an allround board. If Windsurfing is going to make it for the 2020 Games, the Phantom class may be it's best bet? Give it a try and find out how much fun it is to race with friends.


Svein Rasmussen
President Starboard Co, LTD



Team Tiki Myanmar

"Svein Rasmussen is one of the most influential figures in modern Windsurfing. Following a successful career as a professional windsurfer, he changed tack to start Starboard in 1994 and created a company that has evolved into a clear leader in today's competitive board market. His innovations and trendsetting ideas are responsible for the introduction of short and wide board designs but far from resting on his laurels, he has plenty more ideas to expand and progress our sport"

Windsurf UK



Scott and Svein battling it out since 1987

Before harnesses, retractable daggerboards and long sleeve suits



INNOVATION QUALITY

2014

2014: our finest collection of boards yet. A consolidated board range refined for every windsurfing category and innovative in many new ways.

Key highlights of the year include the reintroduction of the slim **Atoms** and our big push with the new **WindSUP Freeride**. The latter, thanks to its clever Long Tail design concept, I personally believe can single-handedly take us back to the future, into a world of popular mainstream windsurfing, shared by friends and family together, planing and non-planing, on one single board (see page 50).

Our team based here at HQ in Thailand grows larger with the arrival of Project Managers Fabian McGovern and Antoine Lefebvre, who will be bringing lots of fresh ideas and new concepts to Starboard 3.0.



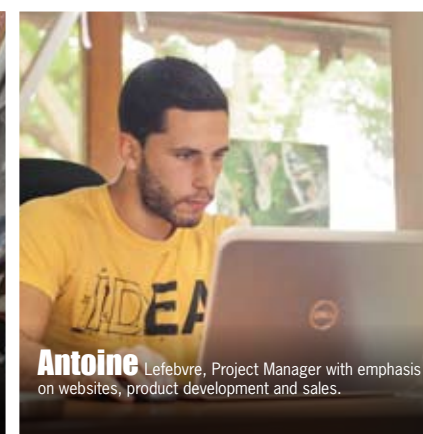
DREAM TEAM
TIESDA YOU



Fabian McGovern, Project Manager with emphasis on media communication, product development and team management.



Remi Vila, head of Research and Development, with focus on racing, freeride, WindSUP and Inflatables.



Antoine Lefebvre, Project Manager with emphasis on websites, product development and sales.



Arnon Saisorn, Production manager and our key link between prototyping and production.



Toon Phaitoon Kaewhorrit, **Ex** Thanuphong Saisonthanant, **Den** Chomkokgroud, **Chat** Apichat Taewnade, **Don** Thongchai Phudansong, master craftsmen and shapers in the Starboard workshop, producing the most accurate custom prototypes.



Toon



Ex



Den



Chat



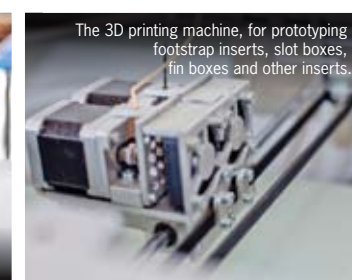
Don



Jaruk Thongpraeb, who hand-built our load cycle-testing machine that simulates repeated loads over a product's entire lifetime.



The CAD/CAM shaping machine, for shaping the foam cores of our prototypes.



The 3D printing machine, for prototyping footstrap inserts, slot boxes, fin boxes and other inserts.



The template plotting machine, for drawing out our shaping templates.



Arwut

Lei

In the next six pages and throughout the catalogue are many more people who have contributed to Starboard 2014. We can't thank everyone enough for their support, inspiration and energy over the years.

It's been a fantastic journey and we hope that you, dear windsurfer, will enjoy reading our catalogue and discovering all the details of your favourite new board, whether you're riding waves, powering your paddle-board with wind or learning to windsurf for the first time.

Tiesda You
Starboard Board designer / Brand manager



Our load-testing machine we use to analyse load/stress curves, yield and fracture points.



Arwut Sanpatchaya, **Lei** Angelic Abinan, **KOLTdblack** Nitiroj Chawalerswattanachai, graphic designers behind the board designs, catalogue and website productions.

STARBOARD TEAM

Beyond our workshop based in Taco Lake and our test centre in Thailand are a team of people who support Starboard in many different ways.

From marketing to development, from testing prototypes to beta-testing websites, from taking photos to editing videos, from inspiring a new product range to proofing order forms, from publishing travel stories and scouting for young new riders, we'd like to take this opportunity to say a BIG THANK YOU for your help and support.

Many of you, like Joe, Scott, Ian, Tor, Karen and Keith Baxter, you've been here since the very early days. Some, like Dany, Sean and Johannes, we look forward to the years to come. Thanks for sharing this journey of a lifetime with us.



Scott McKercher
PWA Wave Champion 2004 / wave board designer / travel stories and video



Mathieu Rauzier
Starboard WindSUP designer / UltraSonic owner



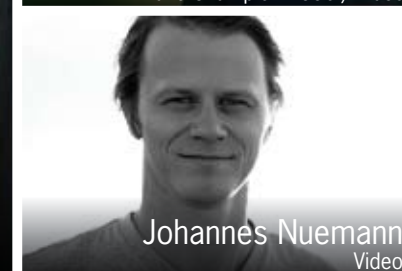
Ian Fox
Starboard World President /
Starboard Australia



Joe Dumrongvivat
Starboard Group GM



Kevin Pritchard
PWA Wave Champion 2006 / video



Johannes Nuemann
Video



Ben Severne
Australia Wave Champion



Dany Bruch
PWA wave tour top 5 / wave board designer / video



Jerome Houyvet
Photography



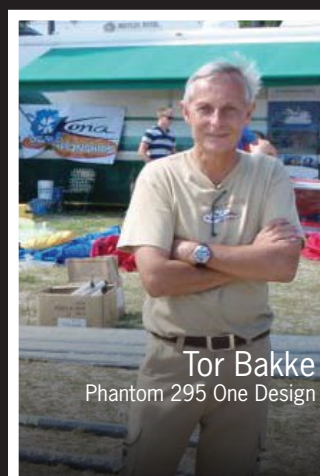
John Carter
Photography



Sean O'Brien
Video



James Hooper
NuEvo / Nude Custom Boards Shaper



Tor Bakke
Phantom 295 One Design



Connor Baxter
All Star



Clement Morandiere
Guest tester WindSUP Inflatables
and WindSUP Freeride



Mary Hasavari
Video



Taty Frans
Freestyle board / fin designer



Iballe & Daida Moreno
PWA Wave Champions / video / clinics and event organisers

STARBOARD PWA constructor's CHAMPION



Quincy Offringa



Björn Saragoza



Björn Dunkerbeck,
PWA Slalom Vice-champion 2012
(using production iSonic boards)



Philip Köster,
PWA Wave Champion 2012
(using 2012 production Evo boards, 2013 production 'Koster' Kodes)



Anne - Marie Reichman



Ben van der Steen



Gonzalo Costa Hoevel,
Formula Worlds Vice Champion 2013



Cagla Kubat



Michael Polanowski



Zane Schweitzer



Alberto Menegatti



Cyril Moussilmani



Vincent Langer



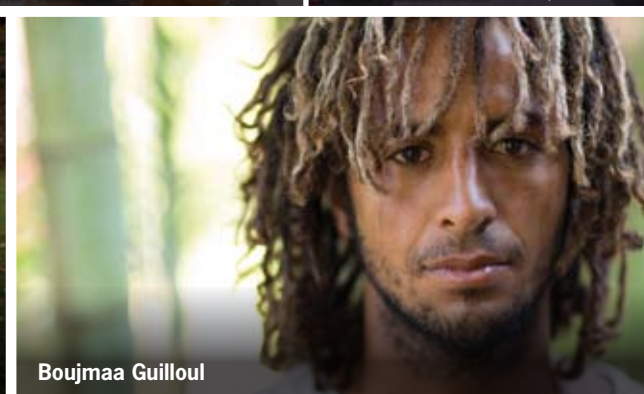
Moritz Mauch



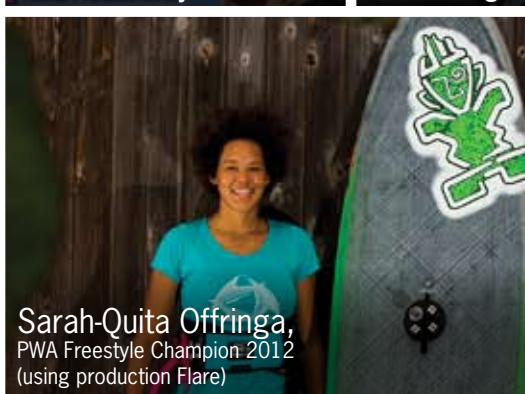
Dieter van der Eyken



Kiri Thode,
PWA Freestyle Vice-Champion 2012
(using production Flares)



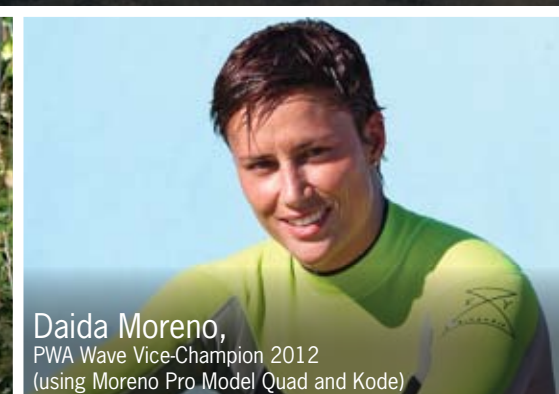
Boujmaa Guilloul



Sarah-Quita Offringa,
PWA Freestyle Champion 2012
(using production Flare)



Iballe Moreno,
PWA Wave Champion 2012
(using Moreno Twins Pro Model Quad and Kode)



Daida Moreno,
PWA Wave Vice-Champion 2012
(using Moreno Pro Model Quad and Kode)



For a record fifth consecutive year, Starboard wins the prestigious PWA Constructors' title 2012. As we go to print, we also lead the 2013 constructors' ranking. With good winds, good waves and lots of great events, we hope that Starboard's Dream Team will continue to win more titles, riding those boards we shape, design and test together.

Throughout the season, our title winning team rode exclusively production boards, with exception of Iballe and Daida Moreno who, for the Canaries events, used two prototypes that went to mold just after the event to become the Moreno Twins Pro Models. Philip Köster also used a prototype Kode 92 to win in Sylt, a board that also went to mold right after.

Besides those, production boards that are the same as those you can find in shops, are what our pro riders ride. Since 1994.



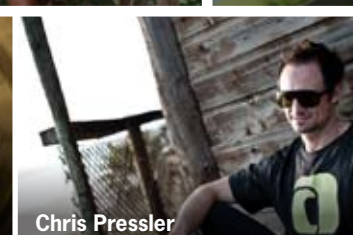
Patrik Pollak



Gabriel Browne



Nicolas Akgazciyan



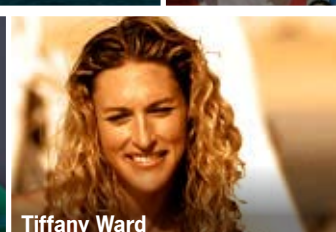
Chris Pressler



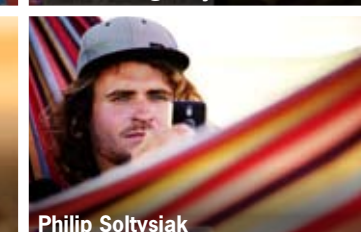
Ethan Westera



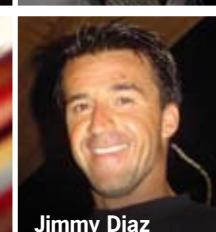
Fabio Calo



Tiffany Ward



Philip Soltysiak



Jimmy Diaz



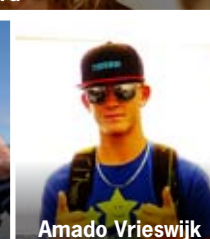
Steve Allen



Raimondo Gasperini



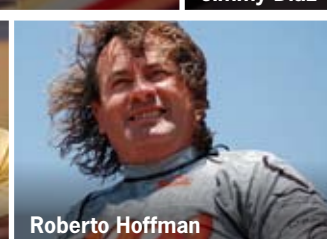
Timo Mullen



Amado Vrieswijk



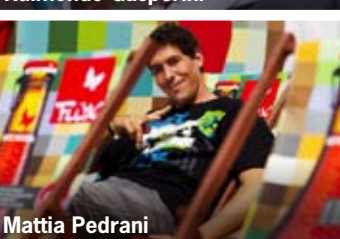
Antoine Questel



Roberto Hoffman



Wilhelm Schurmann



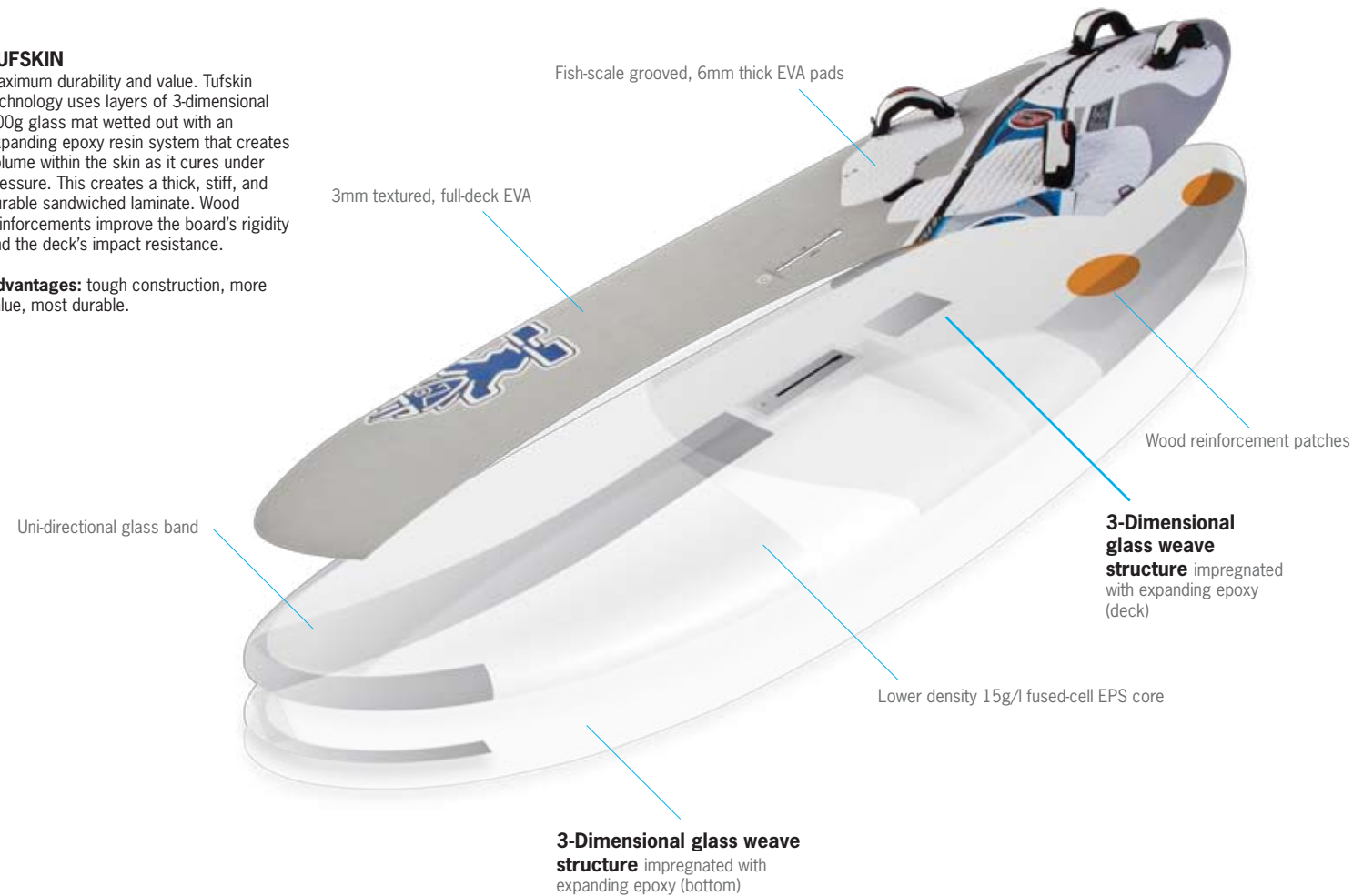
Mattia Pedrani



TUFSKIN

Maximum durability and value. Tufskin technology uses layers of 3-dimensional 400g glass mat wetted out with an expanding epoxy resin system that creates volume within the skin as it cures under pressure. This creates a thick, stiff, and durable sandwiched laminate. Wood reinforcements improve the board's rigidity and the deck's impact resistance.

Advantages: tough construction, more value, most durable.

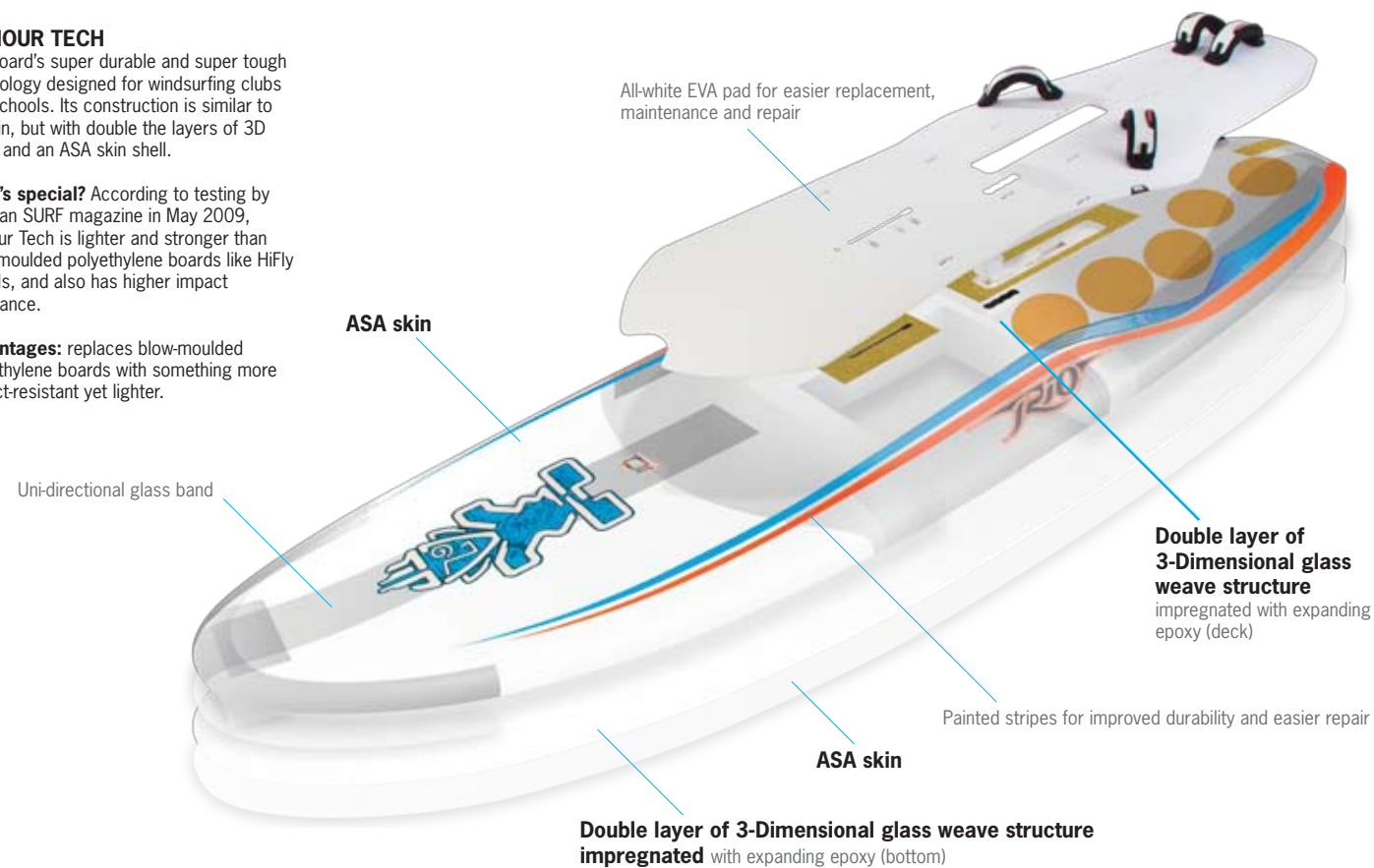


ARMOUR TECH

Starboard's super durable and super tough technology designed for windsurfing clubs and schools. Its construction is similar to Tufskin, but with double the layers of 3D glass and an ASA skin shell.

What's special? According to testing by German SURF magazine in May 2009, Armour Tech is lighter and stronger than blow-moulded polyethylene boards like HiFly boards, and also has higher impact resistance.

Advantages: replaces blow-moulded polyethylene boards with something more impact-resistant yet lighter.



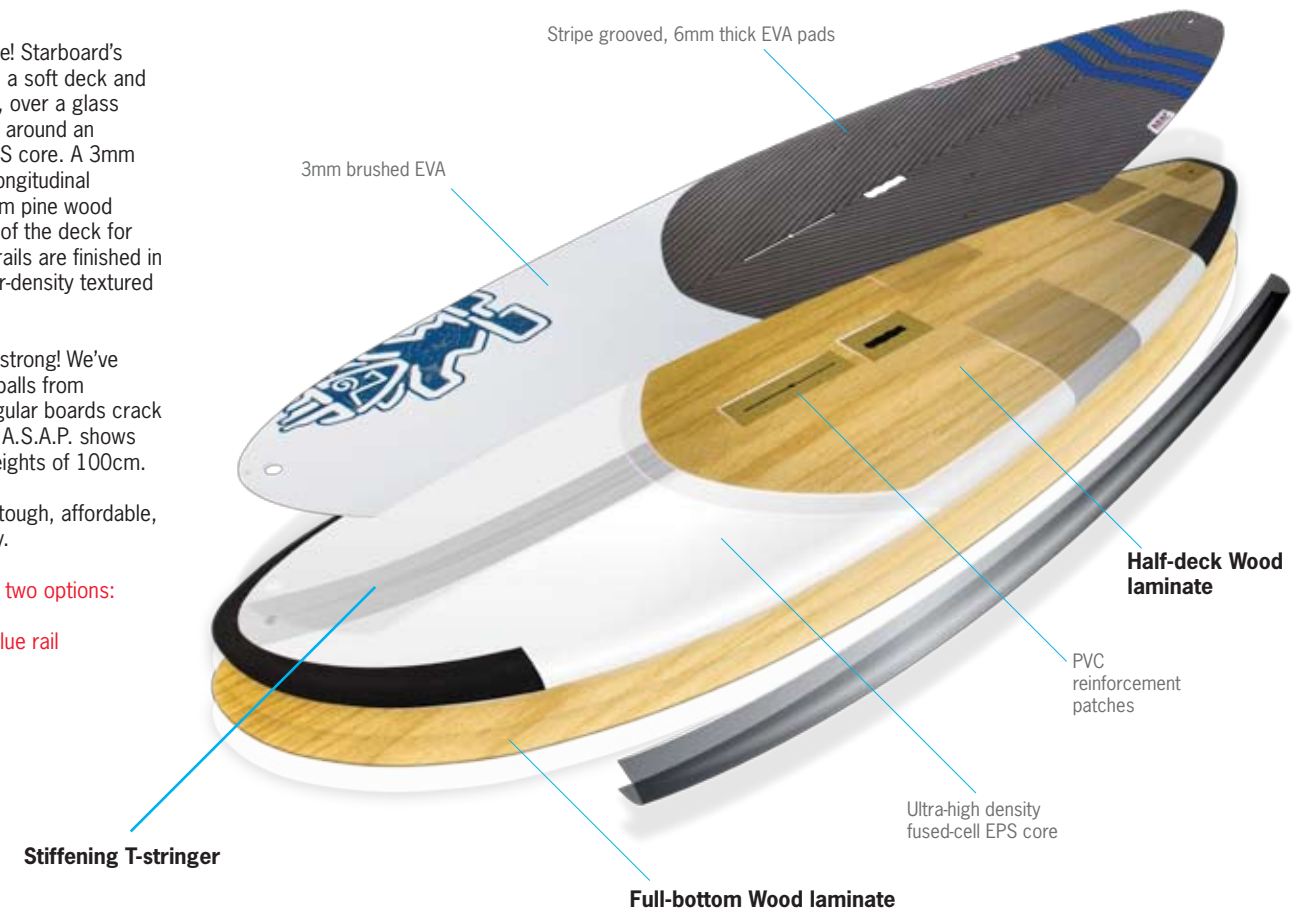
As Strong As Possible! Starboard's new technology uses a soft deck and soft rail construction, over a glass fibre shell that wraps around an extra-high density EPS core. A 3mm stringer adds extra longitudinal stiffness and a 0.6mm pine wood covers the back half of the deck for extra durability. The rails are finished in scuff-resistant, higher-density textured EVA.

What's special? It's strong! We've dropped 10kg steel balls from different heights. Regular boards crack at a height of 20cm. A.S.A.P. shows only a soft dent at heights of 100cm.

Advantages: super tough, affordable, safe and user-friendly.

Now also available in two options:

- Premium polished blue rail
- Durable EVA rail

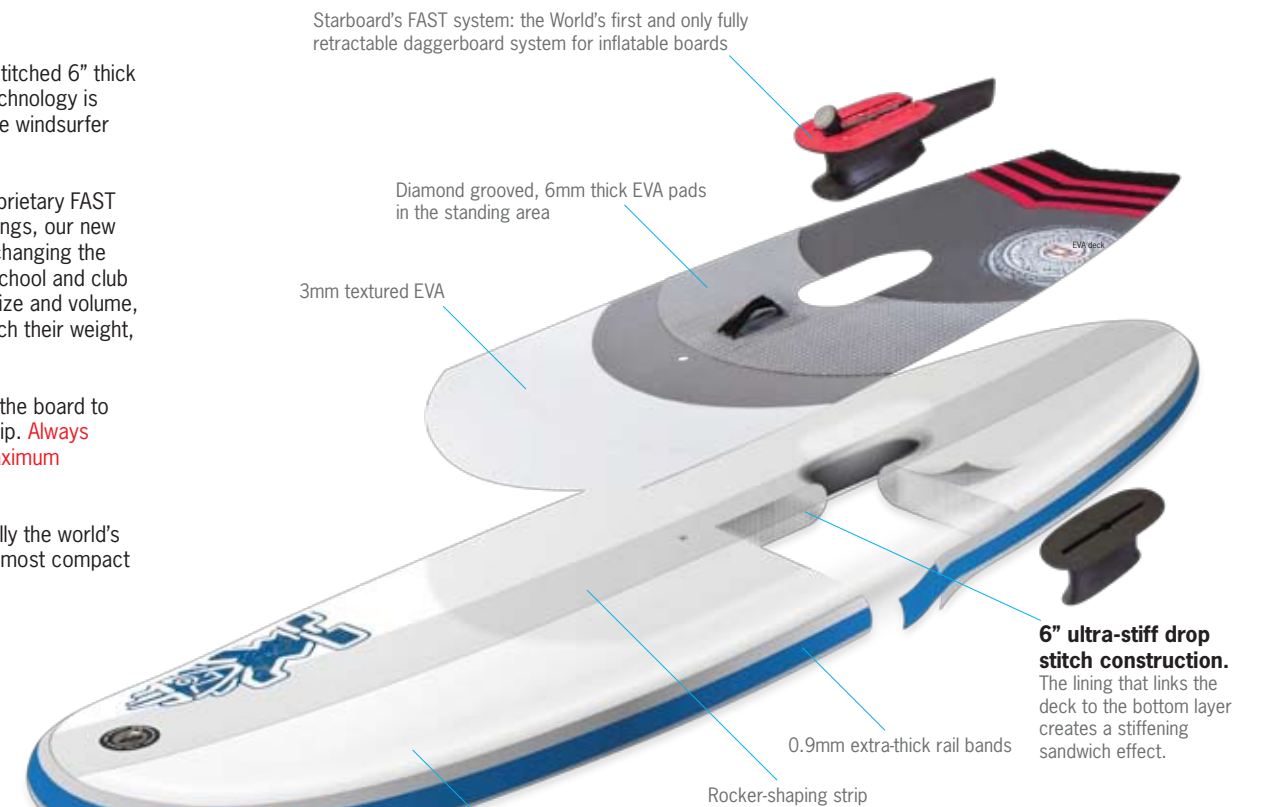


Using super stiff drop-stitched 6" thick inflatable fabric, this technology is reinventing the inflatable windsurfer concept.

Combined with our proprietary FAST box and Clipperbox fittings, our new Inflatable collection is changing the game in recreational, school and club windsurfing. For their size and volume, no hard board can match their weight, strength and durability.

A full EVA deck covers the board to provide comfort and grip. **Always inflate to 17 PSI for maximum stiffness.**

Advantages: Technically the world's strongest, lightest and most compact technology, all in one.



The World's STRONGEST, LIGHTEST and MOST COMPACT board construction



CARBON HYBRID // CARBON WAVE EDITION

Carbon is our lightest and stiffest construction. We use flat-laid filaments instead of woven filaments, making our Carbon significantly stiffer and lighter than regular carbon.

What's special? Boards that are jumped and boards that benefit from a more comfortable feel use Wood PVC sandwich on the bottom (we call it Carbon Hybrid).

The Carbon Wave Edition construction goes a step further: we use a thicker T700 Biaxial Carbon grade on the deck, dual density, double sandwich PVC core on the bottom and a new uni-directional reinforcement carbon patch.

Boards that require maximum stiffness and responsiveness, typically racing boards, use single PVC core and carbon both on the deck and bottom (Carbon Reflex - see next page).

Advantages: lightest weight, stiffest flex for the best acceleration and crispest response. Strong yet comfortable.

**Throughout 2013, magazine tests have measured Starboard Carbon boards to be 200g lighter on average than the competition.*



WOOD // WOOD WAVE EDITION

Developed by Jean Louis Colmas in 1984, Wood Technology became Starboard's trademark construction in 1995. Starboard's production Wood boards set the lead in lightweight sandwich technology then, weighing in at a kilo under the competition, yet with higher impact resistance. Today, boards from many brand follow with a similar yet heavier construction. At Starboard, Wood Technology remains a favourite for riders preferring more comfort, more control and that special, unique feel of an original Starboard Wood board.

What's special? All Starboard Wood boards use a full PVC sandwich core to form the deck. This makes it lighter, stiffer and stronger than other wood constructions that do not have a PVC sandwich core.

Advantages: Lighter than any other construction except Carbon. More impact resistant and more comfortable than Carbon.

**Throughout 2013, magazine tests have measured Starboard Wood boards to be 370g lighter on average than the competition.*

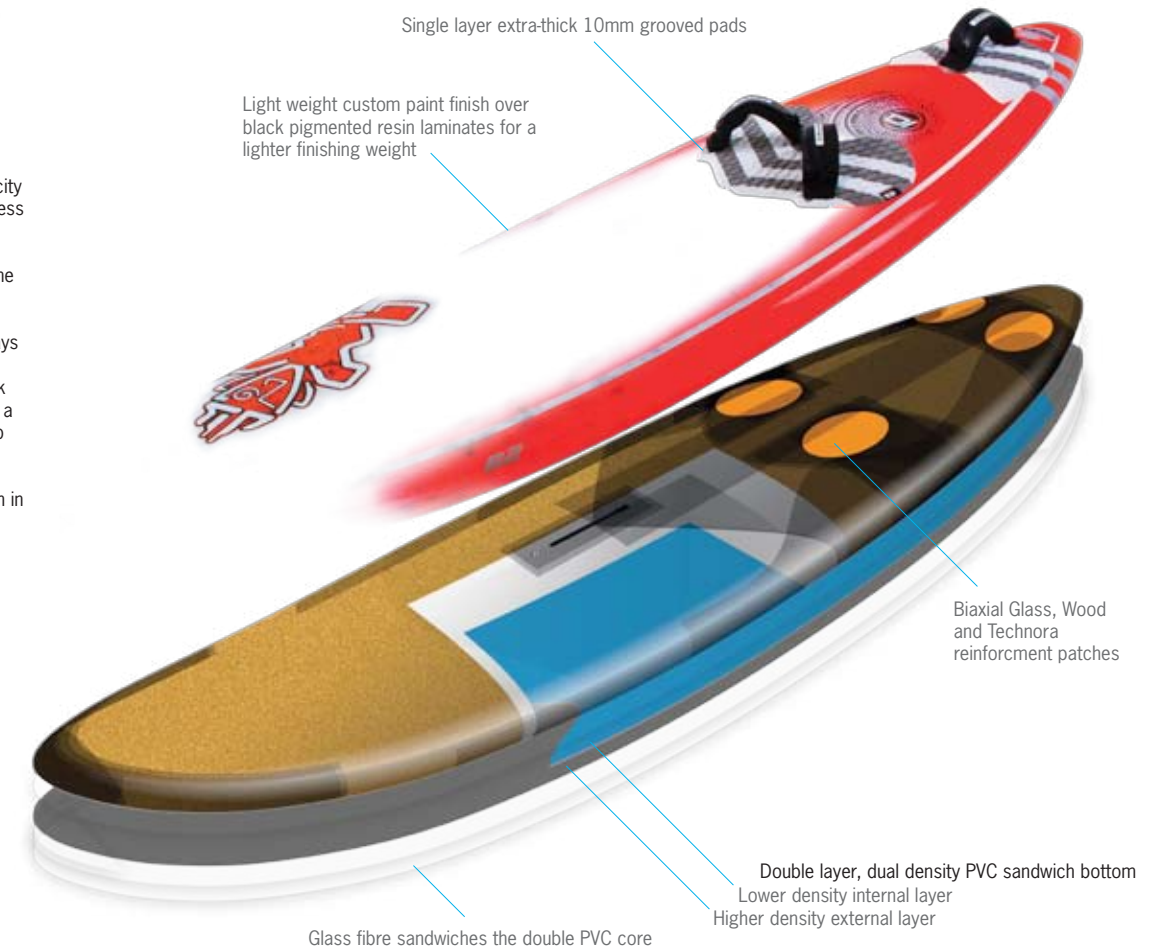


TECHNORA™

A lightweight, stiff and crisp construction providing the highest performance value. Technora™ is a special type of high tenacity Aramid fiber with remarkably high toughness and impact resistance. Technora™ reinforcements, together with Kevlar®, Carbon and Wood laminates strengthen the skin, nose, and heel areas.

What's special? Technora™ boards always use full PVC sandwich core construction, both deck and bottom. We've added black pigment and kept the white paint finish to a minimum, to keep the weight down and to give the board a custom look.

Advantages: light weight, stiff flex, tough in the most impact critical zones. Easier to repair.



CARBON REFLEX

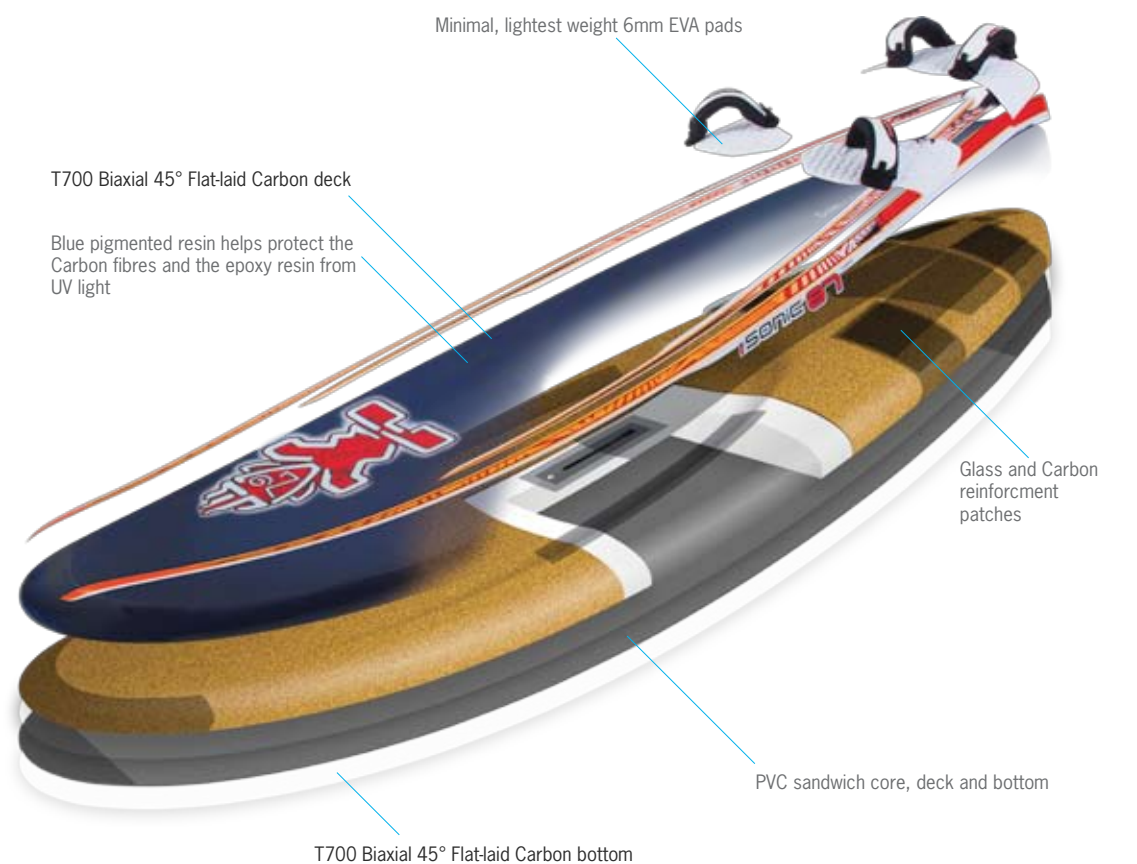
Carbon Reflex designates a racing construction that uses Biaxial T700 flat-laid Carbon both deck and bottom, combined with a 75kg/m3 density PVC sandwich core.

Some boards use 30° weaves, some use 45° degree weaves and others use a combination which also includes uni-directional (0° weave) carbon, to achieve tailor-made reflex response according to the boards' length, thickness and wind-range.

What's special? The lightest and most responsive feeling boards. Unlike ultra-stiff Carbon boards of previous generations, the Carbon Reflex flexes and responds to give a fast, efficient and comfortable ride.

New blue pigmented resin finish helps protect the epoxy resin and carbon fibres from UV light.

Advantages: our very lightest weight, with fastest flex for the best acceleration and crispest feel.





Tuttle Box: the strongest and most reliable fin box system. Two bolts are used for a more secure fitting. Boards fitted with a Deep Tuttle fin box can use both normal and deep tuttle fins, allowing the board to use a wider range of fin sizes.



Heel bumpers: cushions landings, protects the board from heel impacts. Featured on the Quads.

The Slot box is designed to be extra light, weighing 70% lighter than a US box. It has 3cm of adjustment room and current US based fins can be cut to fit. The custom-manufactured bolts fit the same screwdriver as your footstraps, making them effective against sand, keeping the system simple and hassle-free.

"Quad boards fitted with Slot Boxes weighed, on average, 640g lighter than those using conventional boxes (Boards magazine 75 litre wave boards test, Dec 2010)"

New for 2014: Starboard's exclusive 4th generation Slot Box with oversized brass insert fittings for a stronger fit.



New! Extra thick deck pads: single layer, high density pads for a firmer feel and extra heel impact resistance. Featured on the Kode Waves.



Drake Wave Straps Mk III

Wider double-flap straps shaped for wave/freestyle riders. Extra strong, holds its shape impeccably and features strap-size indicators for easy size adjustment.

Offset Footstrap washer:

Extra thick for a firmer grip without bending under pressure. Offset hole: turn the washer 180° and your straps will be tighter by 2.5mm.



7x32mm Footstrap Screws:

Starboard's extra wide footstrap screws increase the overall strength of this connection point. The screws won't snap nor rip out.



Dual Density Thick pads: softer inside layer for comfort, harder, grippier upper layer. Total thickness of 11mm gives a nice high ride. Featured on the NuEvos.



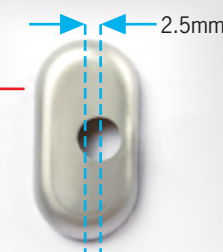
Fish Scale Pad: unidirectional traction that grips when pushing into the straps, and releases when pulling out.

Sponge pads:

super comfortable fish-scale pads with a 5mm sponge underlay that also exaggerate the deck dome for maximum grip and comfort. Featured on Kodes, AtomIQ and Carves.

Drake Slick Straps MkV:

Narrower freeride/slalom straps. Built similar to the Wave strap with added flex and a narrower body. Size Indicator Tabs makes strap sizing a breeze.



One screw fits all: air-valves, tuttle boxes, Slot box, US box, footstraps: a single screw driver fits them all. Simple.

K9 Anti-twist plugs: sandwiched between the board and the strap, the K9 plug has four canine teeth that sink into the strap to provide a mechanical anti-twist effect. No twisting means better control, better feel and better safety. On the most heavy-duty boards, the K9 system is replaced with double-screw strap inserts for the back strap: no twist and super strong.



FIT and FUNCTION



dream team
TATY FRANS
2012 PWA FREESTYLE
1st PLACE OVERALL

Black Box	p20-21
NuEvo	p22-23
Quad	p24-25
Kode Wave	p26-27
Kode Freestyle Wave	p28-29
Flare	p30-31

dream team
BOULMAA GUILLOUL
ma

WAVE

and FREESTYLE

Wave and freestyle: the most extreme and visually spectacular side of windsurfing. Riders and performance levels keep rising, with double loops becoming the norm and tricks only getting higher. In response, Starboard introduces the new Wave Edition construction that makes our boards stronger than ever.

- Starboard's 2014 wave and freestyle collection includes the revolutionary Black Box concept led by **Dany Bruch** a board for 'real-world wave' conditions.
- Scott McKercher's** signature Quad boards designed around his trademark speed, flow and power style, are upgraded in the 87 and 92 sizes.
- 2012 Champions **Daida and Iballa Moreno** introduce their new Pro-Model Kode Wave 67 and Quad 67.
- Philip Köster**, PWA's youngest-ever Wave Champion 2011 and champion again in 2012, upgrades his signature 'Köster Kode' range of fast, aerial, rotational style boards with shorter lengths and new rail shapes.
- James Hooper** from Nude Custom Boards Australia, adds three new sizes to the surf-style NuEvo range and upgrades the shape of the 92.
- The freestyle Flares, developed by **Taty Frans** and **Rémi Vila**, have three new sizes in the 81, 91 and 101.
- Tiesda You** worked with **Antoine Lefebvre** and **Fabian McGovern** to develop the new aerodynamic Bullet Nose concept for the 2014 Kode Freestyle Waves.

Photographer: Jeroen Caster

STARBOARD WAVE AND FREESTYLE

GETTING STARTED

WindSUP

FREERIDE

RACING

WAVE & FREESTYLE



BLACK BOX

THE REAL WORLD / LIGHT WIND REVOLUTION

The Black Box is not a wave board for all conditions. The Black Box is not about top speed. The Black Box is not about jumping.

The Black Box is the board that excels in small, mushy waves and light winds. Many boards are marketed for real-world conditions and real-world sailors. Dany Bruch's creation takes it a step further by offering a very short and wide shape with no excess volume that will create and hold speed on a wave like never before.

"Actually, the Black Box is a carving beast that turns in the smallest pocket. The rails provide loads of grip; reaching high speeds in mushy and medium-sized waves, always with power underfoot. What surprised us is that it carved better than the Quatro LS 90, the turns are tighter!" **PlancheMag, France**

Model	Volume	Length	Width	Tail width	Fin	Finbox	Sail range
Black Box	87	215	62.0	43.2	2xMB Twinzer 15.5+MB Twinzer 12	US Box+2xSlot Box 10	5.0-6.0
Available in Carbon and Wood							

Thick stubby nose for floatability.

Very short at 215cm with a lot of width in the tail that carries through to the nose.

Mono concave feeding into flat double concave in the standing area for lift, quick accelerations and speed on the wave. Vee in the tail for a responsive feel when engaging the rails.

Extra-wide square tail with fast tail rocker provides buoyancy and speed to make the most out of small, mushy waves and light wind conditions.

Tri-fin configuration with twin fins spaced wide apart for easy turns and a trailer fin for drive and stability.

Self-generated speed combined with the very short length will let the rider link together more turns with more speed when the conditions would normally only allow for one, if any.

"All the testers were unanimous: the Black Box is different because it accelerates on its own, even without power in the sail, and produces the speed to string together turns and carves. It proved to be fun when the conditions weren't." **WIND Magazine, France**

"What we have here is a board that has taken a massive leap of faith on the evolutionary scale of width and length. Not only does it work, but it truly excels for riding in smaller, mushy waves and lighter winds. And let's be honest that's what most of us sail in most of the time. Truly exceptional!" **BOARDS Magazine, UK**



NUOVO

SURFBOARD STYLE

Fin type: Twin. Widely spaced fins emphasize the twin fin feel of the board and makes sure a fin is engaged even in the most on-rail turns. A slight toe in of the fins makes the board more responsive to rider input and gives the board a real surfboard feel.

Deck shape: The flat deck gives the feel of a thinner board while retaining the float of a thicker board.



Fittings: Ultra-light Slot Boxes are used for twin-fin setup.

Pads: Dual-layered, extra thick pads give a soft, smooth and comfortable ride.

Outlines: Very compact outlines ("Chopped-off tail and nose") allow the board to respond and react quickly.

Bottom shape: Flat through the nose section. With V accelerating Vee towards the tail. Double concaves from just in front of the mast position, finishing just in front of the fins, help to create extra lift.

New 86, 92, 101 and 110 sizes. New Wave Edition construction.

Rocker: Medium rocker curvature is a comfortable balance between drive and release. Suits the largest range of conditions and riders. The entry rocker is high enough for reliable re-entry into steep sections or small, tight waves.

Rails: The Nuevo has a flat deck shape with progressive rails. Rails forward of the mast track are a full rounded section to prevent tripping in chop. Tuck is maintained through the mid-section to provide grip through rail turns. There is a small amount of tuck through the tail section with a sharp edge for release.

The surf-style 2014 NuEvos waveboards include a new shape for the 92 and additional sizes with the 86, 101 and 110 sizes.

Designed in Western Australia by James Hooper, the NuEvo's compact shapes, soft surf-style rails, flatter decks, fin placement and bottom shape make them efficient and easy surfer in sideshore to side-onshore conditions, from knee to logo high waves.

The NuEvos are comfortable boards with forward Vee, soft rails and soft pads that dampen the effects of chop.

The new 86 size plugs the gap between last year's 80 and 92. The 101 and 110 are the new XL waveboards. With waveboards getting easier and easier to ride and handle, riders are choosing larger and larger boards: a larger size let's you catch more waves, more often and in lighter winds. The new 92 shape has a faster rockerline, added Vee and deeper double concaves to improve it's speed and rail-to-rail performance.

Model	Volume	Length	Width	Tail width	Fin	Finbox	fin range	Sail range
NuEvo 73	73	221	55.0	35.7	2 x Twin Surf 150	2x Slot Box 13"	14-16	3.0-5.0
NuEvo 80	80	224	57.0	37.0	2 x Twin Surf 155	2x Slot Box 13"	14-16	4.2-5.3
NuEvo 86	86	225	58.0	38.4	2 x Twin Surf 160	2x Slot Box 13"	15-17	4.7-5.5
NuEvo 92	92	226	59.0	37.7	2 x Twin Surf 160	2x Slot Box 13"	15-17	4.7-6.0
NuEvo 101	101	227	59.5	38.8	2 x Twin Surf 165	2x Slot Box 13"	15.5-17.5	5.3-6.3
NuEvo 110	110	228	62.0	39.6	2 x Twin Surf 175	2x Slot Box 13"	16.5-18.5	5.5-6.7

Available in Carbon or Wood



SCOTT MCKERCHER
STARBORD 770

QUAD

DRIVE, POWER AND PERFORMANCE

Scott McKercher's signature wave boards. They generate maximum speed and drive, bringing an awesome production of speed, flow and power to your sailing.

Stable and direct in feel, the Quads are most rewarding when driven off the rails for power turns. They like to turn on a full rail. With their four-fin grip, they give a very connected sensation yet they still give the ability to lose the tail when extended through the lip for a rotational (whipped) move.

Onshore conditions: "In onshore conditions, the new Quad produces unparalleled speed out of turns. Initiate the rail into a turn and the board instantly produces speed, all the way around through the arc of a turn for maximum impact when hitting the lip. This is achieved with the mono-concave bottom shape for speed and lift whilst the wider squash-tail outline keeps the tail more buoyant, projecting more for a better release".

Sideshore and big wave conditions: "The remarkable thing is that the same board will handle mast high conditions with equal ease. The Quads draw smooth clean lines, with the ability to shoot vertically at any time, all with a sense of absolute control".

Lightwind conditions: "In light wind conditions it becomes increasingly noticeable that it's the board producing the drive and not the power of the sail, which sets this board apart from anything else on the market".

2014: new Moreno Twins Pro Model, new 87 with a faster rocker and more hipped outline, new 92 with more tail kick and Vee tail.



Tail shape: Squashed square-tail shapes create extra buoyancy that give the Quads more versatility in light winds, in slower waves and in onshore conditions, while improving projection off the lip

Pads: 6mm regular thickness pads, combined with bumpers shaped into the board to absorb shock

Bottom shape: Full mono-concave improve the board's ability to generate speed and drive, even in onshore, lightwind and small wave conditions. The 92 has a tail Vee to improve that board's rail-to-rail reactivity.

New Moreno Twin Pro Models, new improved 87 and 92 shapes. New Wave Edition construction.

Fins: Clear Blue Flex fins are supplied with the Quads. The more flexible fins allow the board to have a more natural flow while remaining connected and in control at all times



Fittings: Ultra-light Slot Boxes are used for minimal weight

Model	Volume	Length	Width	Tail width	Fin	Finbox	Fin range	Sail range
Quad 67	67	220	54.0	34.7	2 x Natural Wave 110 + 2 x Natural Wave 130	4 x Slot Box 2x13+2x10	Front 10-11 / Back 12-13	2.34-7
Quad 70	70	223	56.0	35.9	2 x Natural Wave 110 + 2 x Natural Wave 130	4 x Slot Box 2x13+2x10	Front 10-11 / Back 12-13	2.34-7
Quad 74	74	227	57.5	36.8	2 x Natural Wave 110 + 2 x Natural Wave 130	4 x Slot Box 2x13+2x10	Front 11 / Back 13	3.05-0
Quad 77	77	228	58.0	36.6	2 x Natural Wave 110 + 2 x Natural Wave 130	4 x Slot Box 2x13+2x10	Front 11 / Back 13-14	3.55-5
Quad 82	82	229	58.5	37.3	2 x Natural Wave 110 + 2 x Natural Wave 130	4 x Slot Box 2x13+2x10	Front 11 / Back 13-14	4.06-0
Quad 87	87	230	59.5	38.2	2 x Natural Wave 110 + 2 x Natural Wave 140	4 x Slot Box 2x13+2x10	Front 11-12 / Back 13-14	4.56-5
Quad 92	92	231	60.5	38.4	2 x Natural Wave 110 + 2 x Natural Wave 140	4 x Slot Box 2x13+2x10	Front 11-12 / Back 14-15	4.76-7
Quad 100	100	231	60.5	38.2	2 x Natural Wave 110 + 2 x Natural Wave 140	4 x Slot Box 2x13+2x10	Front 11-12 / Back 14-15	4.76-7

Available in Carbon or Wood



KODE

WAVE

Fins: Vertical, squarer twin fins (design by MB Fins) generate compact power and plenty of straight line traction. On the bottom turn, they provide lots of drive. Off the top, they allow the rider to release and control the tail whip. Philip Köster uses the Maui Ultra Fin X Twin that gives a more slashy feel. Dany Bruch uses the stock MB fins.

Single fin option: Fit a larger single wave fin and plug in the twin fin boxes to get more straight line traction and classic single fin characteristics.

Wider, squashed square tail: The extra width and the square tail shape adds some area and volume to make the boards more versatile in softer waves. It's also better for rotational and reverse moves.

Pads: 10mm, single layer pads configuration, without soft bumpers to provide a direct, responsive feel while still giving some cushioning effect from big jumps.

New: 3cm shorter noses on all models for reduced swing weight, faster response and improved control in rotational moves.

New rounded rails in the nose-to-midsection for easier take slides.

Bottom shape: The forward Vee provides a quick responsive feel when engaging the rail into the turn. I kept the mono-concave in the tail with a flatter section because it gives more speed, drive and power compared to the full vee protos

The new 2014 Kode Wave built in the new Wave Edition construction: the board choice of two times World Champion Philip Köster. They're fast to get on the plane, with remarkable top-end speed for taking jumps into the stratosphere.

Drive and speed are initiated off of the front foot, as is the rotational spinning style of Köster. MB Twinzer fins aid in the early release of the tail for backside 360's and takas whilst the board is still able to maintain the drive required for going down the line and straight line sailing.

They are the most ideal boards for big airs and double combination loops. The boards just want to boost whether it's jumping or waveriding, with excellent projection above the lip along with being able to spin around it.

For 2014, the Kode Waves are 3cm shorter, making them lighter on the scale and under the feet, as swing weight is reduced. A MorenoTwins Pro Model 67 has also been added for the fair sex, smaller riders and nuclear wind conditions.

Model	Volume	Length	Width	Tail width	Fin	Finbox	Fin range	Sail range
Kode Wave 67	67	221	53.5	34.4	2xMB Twinzer 15.5	2xSlot Box 13+US Box 8"	15.5-16.5	2.3-4.7
Kode Wave 72	72	220	56.0	36.0	2xMB Twinzer 16	2xSlot Box 13+US Box 8"	16.0-17.0	3.0-5.0
Kode Wave 77	77	224	58.0	36.9	2xMB Twinzer 16.5	2xSlot Box 13+US Box 8"	16.5-17.5	3.3-5.3
Kode Wave 82	82	230	58.5	37.0	2xMB Twinzer 16.5	2xSlot Box 13+US Box 8"	16.5-17.5	3.5-5.5
Kode Wave 87	87	230	60.5	38.0	2xMB Twinzer 17	2xSlot Box 13+US Box 8"	17.0-18.0	4.0-6.0
Kode Wave 92	92	234	62	38.3	2xMB Twinzer 17	2xSlot Box 13+US Box 8"	17.0-18.0	4.5-6.5

Available in Carbon, Wood and Technora

Photographer: John Carter

WAVE & FREESTYLE

RACING

KODE

STARBOARD

FREERIDE

WindSUP

GETTING STARTED



TATY FANS
2014 FULL FREESTYLE DOWNLOADER

KODE

FREESTYLE WAVE

WAVE & FREESTYLE

RACING

FREERIDE

WINDSUP

GETTING STARTED

Photographer: John Carter

STARBOARD

DREAM TEAM
BJORN SARAGOZA

Fin: MFC
Freewave fin
design

Deck: Thick and domed decks combined with Starboard's contoured Sponge Pads give a modern high-rise feel, with complete control over the board.

Speed: To generate the speed: fast rocker-line curves define the central spine of the bottom shape.

Rails & Tail: Thin rails for bite with increased tail thickness and a vertical release edge for forgiving float out of turns and improved release on to the plane.

Bullet nose: More aerodynamic, less lift, less drag = more speed, more control

Maneuverability: To generate the maneuverability: the spiraling Vee bottom shape exaggerates the curvature along the edges of the board. That's the part you engage as you carve the board.

Three all-new shapes: the aggressive, fast and maneuverable swiss-army knife returns with a new aerodynamic Bullet Nose shape concept.

The Kode Freestyle Waves each offer their own balance between wave, freestyle and freeride.

Kode Freestyle Wave 86: slightly wave-biased design. Shorter nose for 2014 improves responsiveness and control while keeping its ability to ride waves. Highly capable at high wind freestyle and all round high wind freeriding. US Box fitting allows wave fins or freestyle fins to be used.

Kode Freestyle Wave 94, 103: the more freestyle/freeride orientated design. New Bullet Nose design reduces aerodynamic nose-lift to improve top-end speed and control. US Box fitting allows wave fins, freestyle fins or freeride/freewave fins to be used. Outboard strap settings were also moved 2-4cm closer to the rails for improved control in freeride mode.

11mm thick pads with a sponge insert underneath give a very comfortable and controlled ride, where the rider feels like he/she stands nice and high over the board.

Model	Volume	Length	Width	Tail width	Fin	Finbox	Fin range	Sail range
Kode Freestyle Wave 86	86	232	59	38.4	Drake Freewave 26	US 8"	14-26	4.0-6.0
Kode Freestyle Wave 94	94	234	61	38.6	Drake Freewave 28	US Box	14-33	4.5-6.5
Kode Freestyle Wave 103	103	234	64.5	41.8	Drake Freewave 30	US Box	14-34	5.0-7.0

Available in Carbon, Wood and Technora



FLARE

AS LIGHT AS AIR

PROFESSIONAL
KIRI THODE
AUS FREESTYLE VICE-CHAMPION 2002

Three new shapes. One new construction.

The dedicated freestyle Flares include new 81, 91 and 101 models. Thinner and flatter decks combined with increased tail thickness improves the boards' control, their speed of response, the forgiveness during transitions and they offer incredible aerial pop.

The new 'Carbon Reflex' technology uses 45° biaxial T700 Carbon on a PVC sandwich core for both deck and bottom skins: a flexing, responsive, ultralight board that feels active and alive on the water.

The 81 size is also available as a ProKids model, suitable for lighter and younger riders.

Model	Volume	Length	Width	Tail width	Fin	Finbox	Fin range	Sail range
ProKids Flare 81	81	227	57.5	37.5	Drake Ready to FreeStyle 16	Slot Box 13	14-22	2.5-5.5
Flare 81	81	227	57.5	37.5	Drake Ready to FreeStyle 16	Slot Box 13	15-18	2.5-5.5
Flare 91	91	230	59.5	39.7	Drake Ready to FreeStyle 17	Slot Box 13	16-18	4.5-6.0
Flare 101	101	227	62.0	41.2	Drake Ready to FreeStyle 18	Slot Box 13	17-19	5.0-6.8
Flare 111	111	235	66.0	42.2	Choco Starfish New Radical 22	Slot Box 13	20-23	5.2-7.0

Available in Carbon & Technora

Tail shape: New hard edge to promote quicker acceleration

Fins: New Taty Frans Ready To Freestyle fin

Heel gutters accentuate the dome effect on the deck, for added comfort and grip



Slot Box: The strong, lightest and simplest fin box system

Thickness profile: Extra thick tails for big pop and easy float. Thinner, flatter mid section for more control.

New Carbon Reflex construction: ½ kg lighter, alive and responsive feel. New 81, 91 and 101 shapes.

Design: by Taty Frans and Rémi Vila



RACING

BLUE IS THE NEW BLACK

Racing: the most technologically advanced designs in windsurfing, developed with one mission: winning. Starboard's racing program, led by 4x World champion Remi Vila, is the most successful racing program in modern history. What is the secret?

There is no secret. It's a combination of the best and most successful racing team; the lightest boards on the market; the most responsive, flexible and alive board construction known as Carbon Reflex; The largest and longest R&D effort ever undertaken by a single brand. Repeated over and over, year after year.

The R&D team 2014: Cyril Moussilmani (95kg, Severne Sails), Ben Van Der Steen (100kg), Björn Dunkerbeck (103kg, Severne Sails), Jimmy Diaz (85kg, North Sails), Kevin Pritchard (85kg, Ezzy Sails), Steve Allen (80kg, Severne Sails), Alberto Menegatti (100kg), Wojtek Brzozowski (90kg Neil Pryde Sails), Taty Frans (75kg, Maui Sails), Sergei Chaika (70kg, Severne Sails), Somogyvari Balazs (75kg, Severne Sails), Lucy Odillo Maher (60kgs, Severne Sails), Ex Saisorn (60kg, Severne Sails), Szabolcs Maguranyi (90kg, Neil Pryde) & Max Wojcik (75kg, Neil Pryde Sails).

New for 2014: New blue-tinted carbon for improved UV resistance. All new iSonics, new Phantom 377L, new Phantom 295L, new Formula and a new iSonic Speed Special W44.



iSonic
iSonic Speed & UltraSonic
Formula
Formula Experience
Phantom Race 377 L
Phantom 295 L

p34-35
p36-37
p38-39
p40-41
p42-43
p44-45



Photographer: Jan Langer

WAVE & FREESTYLE

RACING

FREERIDE

WindSUP

GETTING STARTED

STARBOARD



iSONIC

MAXIMUM EFFICIENCY

DREAM TEAM
BJORN DUNKERBECK
2002 PWA SLALOM VICE-CHAMPION

Side cuts are wider to slightly reduce the width of the wetted surface under your back foot: higher top speed and high-wind acceleration

Tweaked cutaway designs with a more open angle



Secondary winglets are closed off on the deck-side, eliminating the full step that can crack under exceptional stress.

Shorter lengths more control and wind range

Model	Volume	Length	Width	Tail width	Recommended Fin	Finbox	Fin range	Sail range
iSonic 80	80	238	58.0	36.4	Drake Slalom DW 32 Ready to Race	Tuttle	28-34	5.1-7.0
iSonic 87	87	238	59.0	36.8	Drake Slalom DW 34 Ready to Race	Tuttle	30-36	5.1-7.0
iSonic 90	90	231	63.0	39.3	Drake Slalom DW 36 Ready to Race	Tuttle	32-38	5.1-7.8
iSonic 97	97	231	65.5	43.7	Drake Slalom DW 38 Ready to Race	Tuttle	34-40	5.6-7.8
iSonic 107	107	231	69.5	47.9	Drake Slalom DW 40 Ready to Race	Deep Tuttle	36-42	6.2-8.6
iSonic 110	110	230	75.5	50.7	Drake Slalom DW 42 Ready to Race	Deep Tuttle	38-46	6.2-8.6
iSonic 117	117	228	80.5	54.5	Drake Slalom DW 44 Ready to Race	Deep Tuttle	38-46	7.0-9.2
iSonic 130	130	228	85.5	58.3	Drake Race 48 Ready to Race	Deep Tuttle	44-54	7.8-9.6

Available in Carbon or Wood

80/87/90/97/107 iSonicS have been redesigned: shorter, 2-3cm wider and slimmer. New cutaway/ side cut designs give them a wider wind range than before, more control, better acceleration and higher top speed.

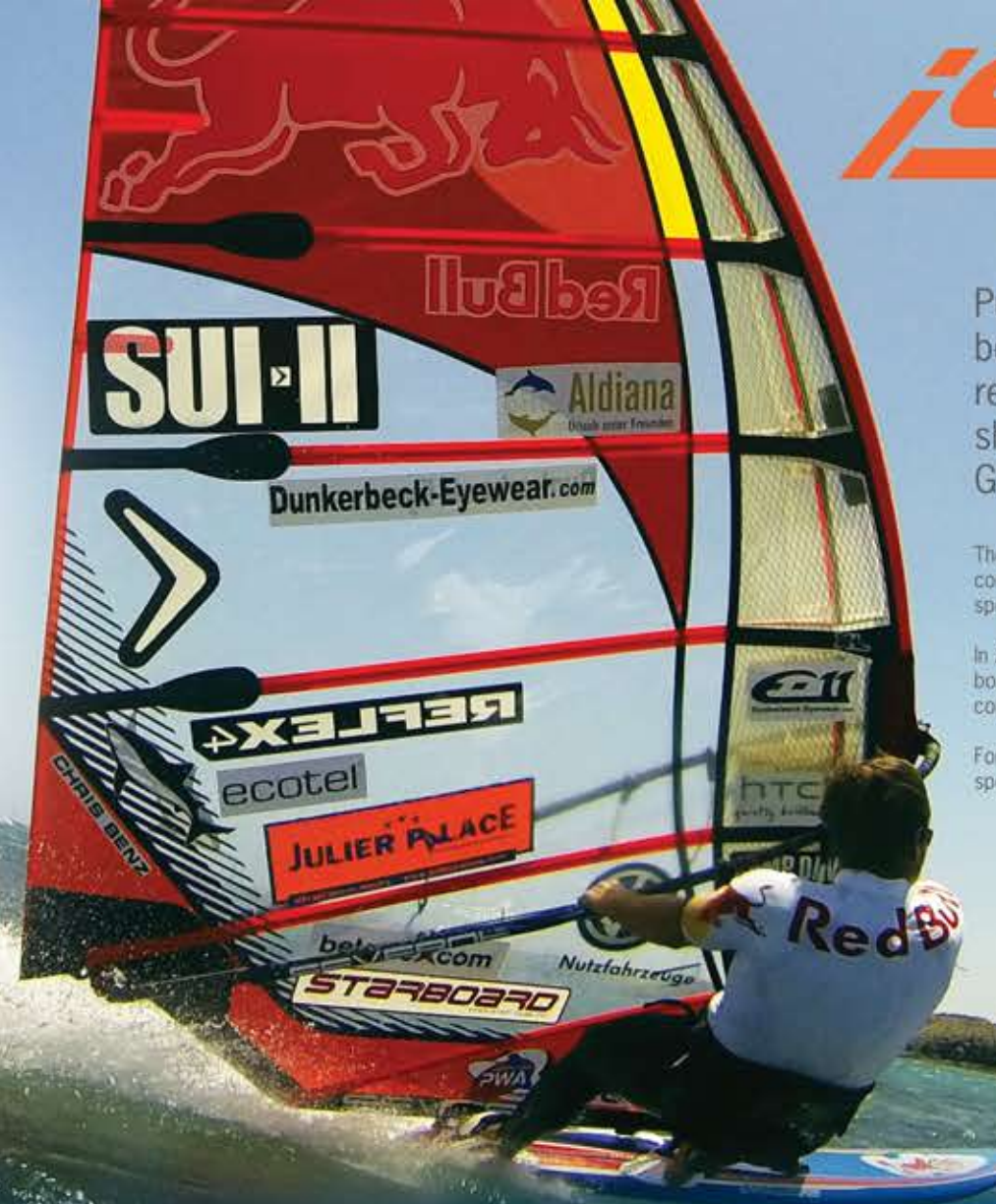
110, 117, 130 iSonicS are more evolutionary with new cut-away/side cut designs that boost top end speed and acceleration. They are a little bit thinner only and the 110 was lengthened to match the balance of the range.

Available in Wood, for more control and comfort, and Carbon, for sharper acceleration, a stiffer feel and earlier planing. The Carbon construction, internally known as Carbon Reflex, uses 45 degree Biaxial T700 carbon both on the deck and bottom. This allows the board to flex then re-bound quickly and responsively: ultra-light, energy efficient yet comfortable and responsive.

Blue is the new black: we've added blue pigment the resin when laminating the carbon to help protect against the effects of UV light. The stickers are finished with fluorescent touches, which is faster than red.

80, 87, 90, 97, 107: significantly upgraded shapes 2-3cm wider, thinner profiles.

110, 117, 130: slight thickness reduction: approximately 3mm, widths remain the same. 110 is 3cm longer to match the overall length/balance of other size.



iSONIC SPEED

Pure Biaxial T700 Reflex Carbon construction deck and bottom, pure carbon rail reinforcement to increase the reflex rate for virtually energy waste, pure speed-needle shapes for one thing in mind: the highest windsurfing GPS speeds possible.

The two middle sizes, the W49 and W54, are Bjorn Dunkerbeck/Carlos Sosa designs made for consistently fast runs throughout a wide range of conditions. These are the typical choices for speed riders on the tour.

In 2013, we introduced the latest and the largest size, the W58, which is quite wide by speed-board standards. It is designed to deliver the highest possible top speed in relatively light wind conditions.

For 2014, the W44 is new. Remi Vila's design based on Bjorn Dunkerbeck's original is designed specifically to break the production speed record in Namibia this year.

Model	Volume	Length	Width	Tail width	Finbox	Fin range	Sail range
iSonic Speed W44	57	230	43.5	25.6	Tuttle	20-26	5.1-6.2
iSonic Speed W49	64	230	49.0	29.0	Tuttle	22-28	5.6-7.0
iSonic Speed W54	72	230	54.5	33.7	Tuttle	26-32	6.2-7.8
iSonic Speed W58	82	231	58.0	36.1	Tuttle	28-34	5.6-8.6

ULTRASONIC ULTRA PLANING

The largest, widest and most efficient of iSonic's.

Wider than ISAF and PWA's 85cm limit, the UltraSonic is technically illegal in official racing. Knowing that racers will not use it in competitions allowed Starboard designers to increase the UltraSonic's user-friendliness and comfort aspects of the board by tuning down the rail shape's power and moving straps slightly further inboard.

The 2014 UltraSonic keeps its cutting edge design that includes open-angle cutaway designs, heel extensions and a low-angle, ultra efficient rockerline. The new blue pigment added to the carbon laminate improves the board's resistance to UV light.

The UltraSonic is an incredibly efficient planing machine.

Heel extensions allow the back foot to apply a positive pressure on the rail. Without the heel extension, the new side cut away shapes would have created a slippery angle of the rail and your back foot would fail to provide constant power

The UltraSonic design starts from the iSonic base and adds some extra width and loses more thickness

The nose of the UltraSonic is then lengthened to make the board smoother to get planing. Tacking, jibing and getting going becomes easier, more stable and more accessible

New cutaway shapes combined with 'side' cut outs and heel extension: reduces wetted area for the same lift, which makes it more efficient. The fin gains more traction and the rider will feel like the board locks more on to its fin. Most importantly, the width of the tail at the 'one-foot-off' remains the same: the board will maintain its ability to provide power, anti-roll stability through chop and acceleration out of a jibe

The rail shapes under the footstraps are more comfortable and less boxy than the iSonic's. This makes the board more comfortable, the straps are easier to get into and there is less burning-power in your back-thigh when fully powered

Model	Volume	Length	Width	Tail width	Fin	Finbox	Fin range	Sail range
UltraSonic 147	147	240	93.2	65.3	Drake R13 58	Deep Tuttle	50-62	7.5-12.0



Photographer: John Carter

WAVE & FREESTYLE

RACING

FREERIDE

WindSUP

GETTING STARTED

FORMULA

2014 and 2015

One board for two years: the new 2014/2015 Formula 167 replaces the two choices of 2012/2013.

The new model is based on an 84cm wide tail and a new low angle 'Bullet Nose' for more a more aerodynamic shape with a smoother water entry to get the board planing out of jibes and accelerating quickly.

The flat is 90cm long for maximum acceleration in all conditions, particularly lighter winds, and the cutaway shapes have been redesigned with new Side Cuts to improve acceleration on to the plane, ride freer, improve upwind tracking and boost the top end speed a notch. The rider's foot remains outboard to keep the board under control and apply maximum leverage on the fin.

The new 167 cut-away design also brings the feel of the board closer to the classic and much loved Formula 161.

Model	Volume	Length	Width	Tail width	Fin	Finbox	Fin range	Sail range
Formula 167 Available in Carbon	167	228	100	84.3	2 Fin 70/72 S	Deep Tuttle	60-70	8.5-12.5

Blue is the new black: UV protecting pigments are mixed with the resin. Built with Reflex Biax 150 carbon on the deck, UD80 carbon on the bottom.

New Bullet Nose design – a low angle of attack for less nose drag, easier and quicker acceleration out of jibes and on to the plane.

Lowered mast track – improves control and makes your rig position more vertical, which helps to hold your board down and maintain mast-foot pressure.

Heel recess for the downwind leg.

New Side Cut design for a freer ride, more speed, improved upwind angles and quicker acceleration.



2013

1-5 May: North Sea Cup, Oostende, Belgium
 31 May - 2 June: Brazil Nationals, Maragogi, Alagoas, Brazil
 7-8 September: Peruvian National Championships, Pisco, Peru
 13-17 November: Formula Experience World Championships, Araruama, RJ, Brasil
 9-14 December: South American Championships, Peru Beach, Buenos Aires, Argentina
 Event dates / Charter boards / rankings and more: <http://feinternationalwindsurfing.com>

FORMULA

EXPERIENCE ONE DESIGN



Formula Experience One Design



Severne Formula Experience sails (available in 7.5, 8.5, 9.7, 11 and 11 LW)

+



Severne Blue Line masts (select the 460, 490 or 530cm length depending on your sail size). 75% carbon content.

+



Severne ALU Race boom (select either a 190/240 or 250/270 length depending on your sail size). T8 Aluminium with tapering 29/33mm diameter

+



Severne 36cm aluminium extension coupled to Severne's base plate

The only 100% planing, global windsurfing one-design class.

Like the open Formula Windsurfing class, it covers a very wide range of wind conditions and starts from just 7 knots of wind. FEOD's equipment rules however, ensure that the board, fin and sails are affordable, durable and consistent over four year cycles.

Charter at each event or order of a package from your local shop and join the fleet: enjoy a pure planing sailing class that is technically challenging, 100% planing and full of high speed thrills.

Size	Luff	Boom	Cams	Battens	Mast			
7.5	486	208	3	7	460/25			
8.5	500	224	3	7	490/29			
9.7	534	254	3	7	530/32			
11.0	556	262	3	7	530/32			
11.0LW	548	258	3	7	530/32			
Board	Volume	Length	Width	Tail width	Fin	Finbox	Sail range	
Formula Experience ProKids	117	216	92.5	69.8	Drake R13 Race NR 620	Deep Tuttle	5.5-8.5	
Formula Experience One Design	160	228	100.5	77.9	Drake R13 70 Ready to RACE	Deep Tuttle	7.5-12.5	
Available in Tufskin								



PHANTOM

ROCKET SCIENCE

WAVE & FREESTYLE

RACING

FREERIDE

WINDSUP

GETTING STARTED



CREW TEAM
REMI VILA
STARBOARD PRO

Outline concept: reduced width at 66.8cm for improved glide and improved raling effect, combined with Bat-Wing tail design to still gain in early-planing and upwind power

Custom made 30 degree Biaxial T700 Carbon deck construction: a unique combination of Reflex response adapted to the longer length of a raceboard.

Slanted adjustable mast track: the front section is raised, helping the board to roll up onto its rail quickly in lightwinds. The back section is sunk below deck level, to improve control in full planing mode

- At low speeds, the **Bat-Wings** sink below the water to allow the water to flow around the narrow, streamlined section of the tail. The board glides with a smooth water exit off the tail.
- In slightly more wind, the board starts to lift on to its rail, so one wing lifts out of the water while the leeward wing continues to travel below the water surface, acting like an extra fin.
- As the board increases speed with in more wind, the wide planing surface starts to generate lift, allowing the board to transition smoothly into planing mode. Because the wings are wide, the planing surface is wide. So the transition into planing is happens earlier than other narrow-tail raceboards.
- In full planing mode, the board planes high above the water, rides fast and free, allows for deeper fins to be used and for deeper upwind/downwind angles to be reached.

A second Phantom Race 377 L is added to the World Champions Phantom family.

This new L model adds 3cm extra thickness for added volume, ideal for heavier riders. The thickness in the tail, under the back foot in reaching position, remains the same as the standard 377 to maintain control in full planing position.

Phantom 377: recommended for sailors under 80kg

Phantom 377 L: recommended for sailors over 80kg

The new pigment blue finish mixed into the Carbon laminate improves the board's resistance to UV light.

Max Wojcik, current Raceboard World Champion, June 2012:

"The Phantom 377 board is very stable upwind and it is going easy on rail from 5-15. It is easy and comfortable to control and steer. The wings in the back of the board make planing in marginal conditions (8-10knots) possible and easy to sustain. The wings are not stopping the board from going fast upwind too. New daggerboard is great for light and medium breeze (up to 15 knots). It's a board of very good quality in materials and details. All in all, the board is easy to sail on the rail when going upwind. In planing conditions, the downwind runs are fast and one can sail really low."

Model	Volume	Length	Width	Tail width	Fin	Finbox	Fin range	Sail range
Phantom Race 377	263	377	67	49.1	Drake R13 Race NR 520 + Daggerboard 780	Deep Tuttle	45-55	6.5-9.5
Phantom Race 377 L	TBC	377	67	49.1	Drake R13 Race NR 520 + Daggerboard 780	Deep Tuttle	42-56	6.5-9.5
Available in Carbon								

2013

11-15 June:
Youth & Masters Worlds Championships
Montalban, Italy

11-14 July:
Festiwind in Lamer Plage, France

17-23 August:
Youth French Championships
Martigues, France

European Championship in Spain,
Brazilian and North American Championships:
Dates to be confirmed

Charter boards, rankings and more:
www.Phantom295.com



Ranking

Updated June 17th, 2013

Number of Competitors: 58

Number of Races: 18

PL	R	NAME	N	SCORE
1	1	Daniel Blinnika	Finland	210
2	2	Minwan Chang Chun Leung	Hong Kong	194
3	3	Yongyong Phonsakul	Thailand	178
4	4	Chun Chai Han	Hong Kong	170
5	5	Subot Sawat	Hong Kong	152
6	6	18 Blinnika	Finland	150
7	7	Phanana Phongsakul	Thailand	140
8	8	Chun Chai Han	Hong Kong	138
9	9	Subot Sawat	Hong Kong	138
10	10	Marina Alabau	Spain	127

Showing 1 to 10 of 18 entries



Bat Wings: a wide planing surface at high speeds, reduced drag at low speeds.
+ Earlier planing
+ Improved upwind tracking
+ Wider wind range
+ Larger fins can be used

New 'L' size for 2014: More thickness, more boxy rails and more volume in the middle section, to expand the appeal of Phantom racing across a wider scope of windsurfers.

Slanted mast track: extra railing-leverage in light winds, more control in highwinds

"A nice balanced gliding feel upwind in light winds. As soon as a little breeze comes the rail wants to angle itself up deliver exciting railing sensations. With a bit more wind the daggerboard retracts and the hull planes up early with great power around the tail part, delivering an enjoyable and fun upwind ride. On the reach the revolutionary winger concept creates a lift and amazing sailing sensation which makes the Phantom 295 the most versatile board in the history of Starboard. The Phantom 295 is a pet project that we are very proud of and wish to share with freeriders and regatta sailors the world over." **Svein Rasmussen**

PHANTOM 295

THE MISSING LINK



The Phantom 295: a fun, social and affordable racing package that covers the widest range of conditions and the widest range of riders, young and old, small, medium or large.
The missing link between the junior Techno class and the RS:X, Formula classes and PWA racing.

Photos, top to bottom:

1. Scott and Svein, Gangnam style 2. The Phantom295.com website showing the latest rankings (Daniel Blinnika currently in the lead) 3. The Tiki 4. Moments before the Phuket racing begins 5. The race is on 6. The Phantom gear at full tilt 7, 8 & 9. Phantom events include plenty of activities for the family and no wind days: massages to refresh those muscles, SUP demo, product presentations and training camps 10. Special thanks to Watchara Wichitong for organising the first and hugely successful official Phantom 295 event. It was a memorable and really fun event. From left to right: Watchara Wichitong, Olympic Gold Medalist Marina Alabau, Phantom 295 founder and board designer Svein Rasmussen, Bianca Alabau 11. The board close up.

Board	Volume	Length	Width	Tail width	Fin	Finbox	Fin range	Sail range	Board bag
Phantom 295 L	217	294	72	52	Drake Venom 54	Deep Tuttle	44-56	5.5-9.5	Included in package
Sails	Cambers	Mast	Boom	Extension	Rig bag				
6.5	2	Severne Blue Line 460	T8 Alu Racing 190-240	Severne HD 36	Included in package				
7.5	3	Severne Blue Line 460	T8 Alu Racing 220-250	Severne HD 36	Included in package				
8.5	3	Severne Blue Line 490	T8 Alu Racing 220-250	Severne HD 36	Included in package				



WINDSUP

WIND-POWERED SUP

WindSUPing	p46-p47
WindSUP Electric Blue & A.S.A.P.	p48-p49
WindSUP Freeride	p50-p51
WindSUP Inflatable	p52-p53
WindSUP Sail Package	p54-p55

Paddle board when there's no wind, windsurf as the wind picks up. Starboard's extensive WindSUP collection is the world's most complete and most innovative, covering waves, freeride, family and more.

- ▶ The Inflatables are all new, with new sizes and new fittings. Available in Deluxe and Fun versions.
- ▶ The ASAPs, (as strong as possible) now come with soft EVA rails or hard polished blue rails for a premium finish.
- ▶ The biggest news is probably the introduction of two new amazing shapes: the Summerboard and the Freeride. The Summerboard is incredibly stable yet fast to glide. The Freeride is indeed Back to the Future, a retro board that accelerates, glides and gets planing smoothly and easily.
- ▶ Not to forget the sails: for 2014, Starboard introduces the new Compact sail package and the new Quick sail compact packages.

DREAM TEAM
BJORN DUNKERBECK
2012 AUB SUBJUM VICE-CHAMPION

DREAM TEAM
ALBA DUNKERBECK

DREAM TEAM
LIAM DUNKERBECK

DREAM TEAM
ZANE SCHWEITZER

DREAM TEAM
JIMENA OCHOA

DREAM TEAM
IBALLA MORENO
2012 AUB WAVE CHAMPION

Photography: Jodie Camp

WAVE & FREESTYLE

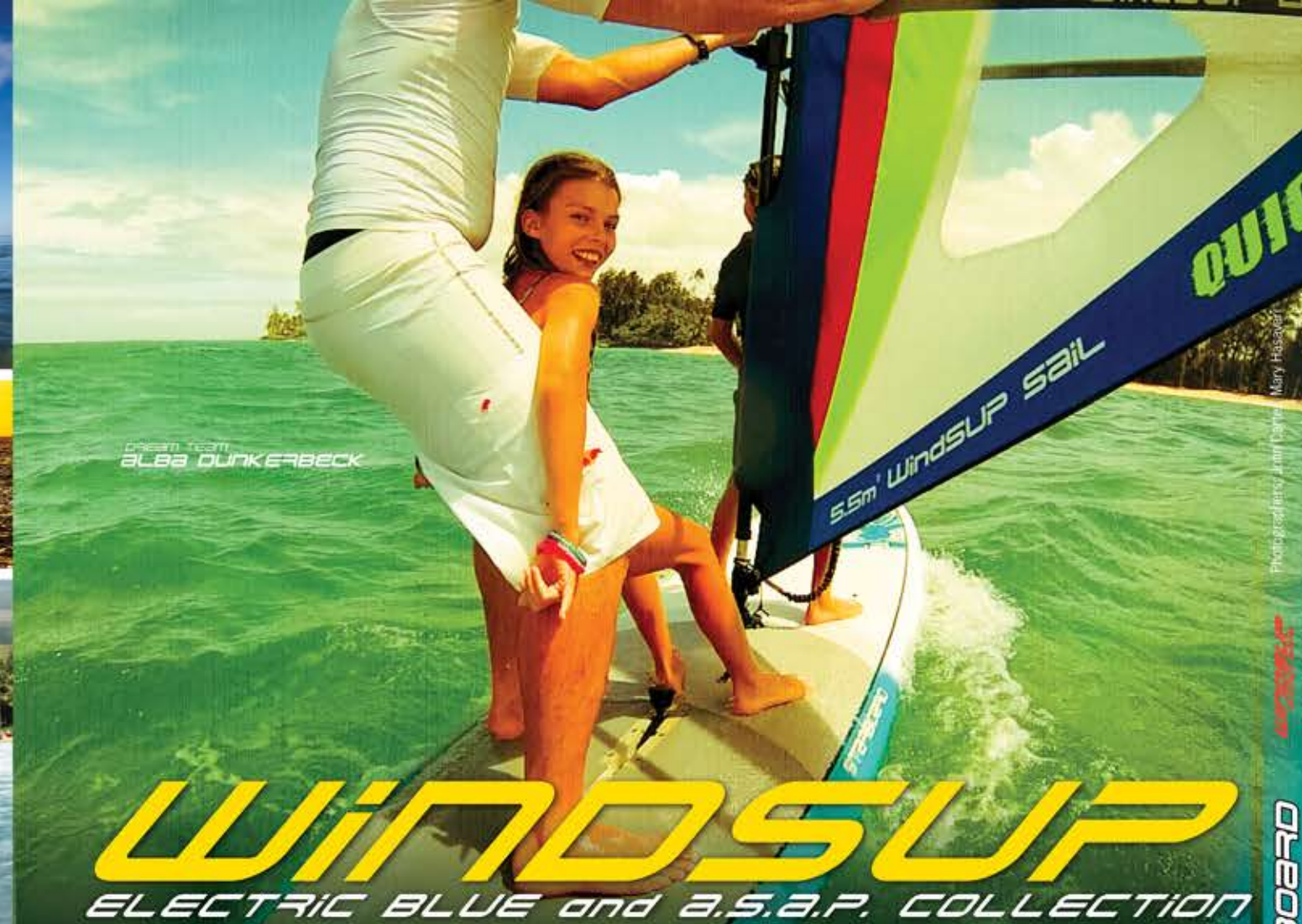
RACING

FREERIDE

WINDSUP

GETTING STARTED

STARBOARD



Electric Blue - The lighter option with a fully retractable daggerboard.

A.S.A.P. - Our strongest construction with hard-wearing EVA soft rails. Tuttle box centre fin system.

A.S.A.P. Polished Blue Rails - Our strongest construction with hard, polished blue rails. Tuttle box centre fin system.

	Electric Blue	A.S.A.P.	A.S.A.P. Blue Polished Rails
WindSUP Wave 8'10"x32"	✓		
WindSUP Kids 9'x30"		✓	✓
WindSUP 10'x34"	✓	✓	✓
WindSUP 11'2"x30"	✓	✓	✓
WindSUP 12'x32"	✓	✓	✓
WindSUP 12'x36" Summer Board	✓		

Our core WindSUP board collection comes available in seven shapes, available in either Electric Blue or A.S.A.P. constructions.

10'x34" - The favorite all-rounder and known by our SUP friends as the Whopper. A fabulous paddle board which performs very well in the waves and at the same time doubles as a cool entry level Windsurfer.

NEW 11'2"x30" - A new favourite from the popular SUP model known as The Blend, offering an excellent glide.

12'x32" - The best compromise between glide and stability, known as the Big Easy. At 82 cm wide, it's a solid platform for even the heaviest of riders.

8'10"x32" Wave - The compact, radical surfing shape with lots of volume and float, blending the best of light wind wave riding as a windsurfer and a maneuverable surfing stand-up paddleboard in one.

NEW 12'x36" Summer board - The most stable board of the range, also known as the Summer Board. Hop on board with your whole family, teach windsurfing to your clumsiest friends or cruise solo with no fear of falling in. It comes with a fully retractable dagger board. Our most recommended board for schools.

9'x30" Kid's - The most compact model, ideal for younger or lighter sailors.

NEW 12'x30" Freeride - Turn to the next page for more details.



WINDSUP

12'2" x 30" FREERIDE



The Planing version: the fin is mounted using a turtlet fin box.

- + Lighter, more discreet, more efficient at getting planing, more suitable for mixed paddle board use and windsurfing
- Fin does not retract

Recommended for mixed SUP and windsurf use, or as SUP with extra upgrade possibilities



The Daggerboard version: fitted with a retractable Clipperbox daggerboard

- + Daggerboard retracts for easier handling on the beach, larger 'fin' gives more performance
- Bulkier system

Recommended for mostly windsurfing use



The Long Tail design concept has arrived: the WindSUP 12'2" x 30" is our halo model for the year 2014.

This retro-looking shape is in fact the future of windsurfing. With it's new long tail concept, you have a popular SUP paddleboard shape that becomes a fast gliding lightwind windsurfer that finally transitions into planing mode effortlessly, easily and in very little wind.

Re-discover windsurfing, the joys of an efficient glide and planing from as little wind as 7 knots. (For the best experience, we also highly recommend the board to be windsurfed with a WindSUP sail, not a planing monofilm sail).



Long Tail concept: thanks to a fast gliding shape, the board accelerates to planing speed easily. Unlike conventional 'funboards', the long tail prevents the nose from lifting and the tail from sinking as the rider moves back: **the board transitions into planing seamlessly**, without effort - the rider doesn't need to learn how to get planing - it just happens. **This is the magical moment.**

Stand Up Paddleboarding: based on the new freeride category of paddle board shapes, the Freeride is the suitable shape for all-round SUP, from flat water explorations to open oceans and swell.

Windsurfing: Fit a WindSUP sail and glide faster. From 7 knots and up, the board accelerates and starts to lift itself up onto a plane.

1967
Jim Drake's
original Skate

1980s

2014

Hard rails:
Planing release

Soft rails rails:
Smooth water flow to reduce drag

The Innovation: by moving the fin/daggerboard further back, the board shifts naturally into a planing position without the need for adjustable mast tracks retractable systems. **The alignment between the sail and the fin reflects the alignment on a regular planing board.**



The perfect match:
Starboard's WindSUP
Compact Sail package

Model	Volume	Length	Width	Fin	Finbox
WindSUP 12'2" x 30" FreeRide (Planing)	237	373	75.0	Drake Hexcel Race 23 + Drake Shallow 41	US 10" + Turtlet Box
WindSUP 12'2" x 30" FreeRide (Daggerboard)	237	373	75.0	Drake Hexcel Race 23 + Daggerboard 57	US 10" + Clipperbox

WindSUP 12'2" x 30" FreeRide (Planing) Package: Includes a WindSUP Sail 5.5 Classic rig package and an Enduro adjustable paddle
WindSUP 12'2" x 30" FreeRide (Daggerboard) Package: Includes a WindSUP Sail 5.5 Classic rig package and an Enduro adjustable paddle



New high-aspect ratio pump: easily achieve the recommended 17-18 PSI

New integrated mast insert system: more simple, more discreet.

Deluxe models: 6" extra-stiff drop stitch technology, Starboard's proprietary FAST box system for both the tail fin and the daggerboard. The recommended option for those who windsurf more than they stand-up-paddle.

Fun models: 6" extra-stiff drop stitch technology, US box system in the tail and centre fin. The preferred option for those who stand-up-paddle often.

INFLATABLE WINDSUP

LIGHTEST, STRONGEST, SMALLEST

Introducing the World's first drop-stitched inflatable windsurfer.

Starboard's innovative inflatables are helping re-inventing windsurfing as we know it: gone are the days when recreational windsurfing meant long, large and heavy boards.

The inflatables are the, technically speaking, the strongest boards, the lightest boards (per litre) and the most compact boards ever. Roll them up and they pack into a car, under the stairs or a cupboard. On the water, their drop-stitched construction makes them suprisingly stiff. Safe for kids to play on, fun and friendly to ride, paddle or wind-power: the new Starboard WindSUP Inflatables are the go-to board for the summer.

WindSUP Inflatable 9'0" x 30": new for 2014, this is the board for younger or lighter riders. The most compact and maneuverable WindSUP Inflatable yet!
WindSUP Inflatable 10'0" x 35": based on the famous Whopper shape, this is the ideal all-rounder thanks to a perfect balance between glide and stability.
WindSUP Inflatable 11'2" x 32": for those who prefer more glide and longitudinal traction. Narrowest and shortest makes it the stiffest one too.
WindSUP Inflatable 11'2" x 39": the super stable option and our test team's favorite. Since the boards are deflatable, why not go for the biggest and most stable width? Take the whole family onboard, teach your clumsiest friends or enjoy time on the water without the fear of falling in.
WindSUP Inflatable 12'6" x 32" Touring: the fastest option with the smoothest glide and a unique hull shape.

Model	Volume	Length	Width	Fin (FUN version)	Fin (DELUXE version)	Sail range
WindSUP 9'0"x30" Inflatable	TBC	274	76.0	2x Drake Shallow 22	Not available	2.5-7.0
WindSUP 10'0"x35" Inflatable	300	314	87.0	2x Drake Shallow 22	2x Shallow 22 + Daggerboard 57	2.5-7.0
WindSUP 11'2"x32" Inflatable	330	338	83.5	2x Drake Shallow 22	2x Shallow 22 + Daggerboard 57	3.0-7.0
WindSUP 11'2"x39" Inflatable	405	341	99.0	2x Drake Shallow 22	2x Shallow 22 + Daggerboard 57	3.5-7.5
WindSUP 12'6"x30" Inflatable	302	386	78.0	2x Drake Shallow 22	2x Shallow 22 + Daggerboard 57	4.5-7.5



WINDSUP

SAIL PACKGES

The WindSUP Sail Packages are the simple, light wind windsurfing rigs. The Classic, Quick and Compact are light, powerful and a perfect match for your paddle board.

Packaging makes windsurfing simple again. New windsurfers and stand-up paddlers will find assembling the rigs easy, with less steps and less technical knowledge needed to rig them right.

For 2014, Starboard is excited to introduce once again the WindSUP Sail Classic along with two new exciting models: the WindSUP Sail Quick and the WindSUP Sail Compact.

Photographer: John Carter

WINDSUP

STARBOARD

WAVE & FREESTYLE

RACING

FREERIDE

WINDSUP

GETTING STARTED

QUICK



Available in
5.5 and 6.5m²

The WindSUP Quick Sail Package is a new sail concept from Starboard that easily assembles in 30 seconds.



The technology behind this sail is a SDM 4-piece folding mast connected by an internal elastic. The mast stays ready for assembly, the boom, mast base and extension are permanently attached: simply unfold the mast, click them together and downhaul.



To assemble the WindSUP Quick, unfold the sail and start connecting the mast pieces from the top down.



As you work down the mast, the elastic inside the mast helps each piece simply click into place.



When complete, effortlessly pull on the downhaul and you are ready to go.

Classic

The WindSUP Classic Sail Package remains to be the simple, light wind windsurfing rig. It is powerful and easy to assemble and now with an RDM mast for 2014, it is lighter and feels smoother on the water.

Available in 4.5, 5.5 and 6.5m²



Light, simple and powerful

The WindSUP Sail Package is designed to power SUP boards fitted with mast tracks and lightwind windsurfing boards

COMPACT



Available in
5.5 and 6.5m²

The WindSUP Compact Sail Package is the simple and compact light wind windsurfing rig. It is light, easy to assemble and easy to transport.



To minimize the size, the sail package uses a 4-piece RDM mast and a 3-piece boom.



It can be conveniently stored and transported in the trunk of a car.



FREERIDE

WINDSURFING

Fly across the water, the wind in your sail and carve out beautiful jibes with the occasional jump: this is freeride windsurfing - the purest, simplest and most popular segment of windsurfing.

- 2014 sees the return of **Tiesda You's** original slim board in the AtomIQ: the maneuverable freemove board with the widest wind range. See back page for more info.
- Rémi Vila** has led the development of the new upgraded Carves that became thinner again, and also the Futura with their new blue finish and their new leaner, meaner fluorescent racing stripes.
- Special thanks in the 2014 freeride development cycle for testing, development and design ideas go out to **Svein Rasmussen, Antoine Lefebvre, Fabian McGovern, Sergei Chaika, Dany Bruch, Ian Fox and Clement Morandiere.**

Carve	p58-p59
Futura	p60-p61
Kode Tufskins	p62-p63
Go	p64-p65
AtomIQ	Back Cover



DREAM TEAM
CHRIS MURRAY
GLOBE-SHOTS.CO.UK

Photographer: John Carter

STARBOARD

GETTING STARTED

WindSUP

FREERIDE

RACING

WAVE & FREESTYLE



CARVE

PLUG AND PLAY



DREAM TEAM
BOUJIMBA GUILLOUL

Photographer: John Carter

WAVE & FREESTYLE

RACING

FREERIDE

WindSUP

GETTING STARTED

Pads: 5mm contoured sponge pads are inserted under the main 6mm grooved pad layer for extra grip and comfort.

New softer rails in this section that keeps the same 'tuck-under' width to make jibing entry easier while keeping a wide planing surface area.

Unlike the Futuras or iSonics, the boards remain generously long by modern standards. This allows for easier passive planing: the boards will glide on to the plane more easily and more gradually.

8% thinner is the average reduction in the mid-section and nose of the board. The tail keeps more thickness to allow for a nicely domed deck, making footstrap positions both inboard and outboard comfortable.

New elongated cut-aways improve top speed and acceleration

8% slimmer again: six all-new Carves to make our plug-and-play freeride boards cover a wider wind range than ever.

The thinner the board, the more sporty it feels, the more controllable it becomes and more efficient at planing and accelerating it becomes. Having been slimmed down 8% last year and 8% again on average, the new Carves keep their widths to maintain their stability, their low-end power, their ability to get planing early then keep planing. A wider wind range than ever before.

Remi Vila, chief designer, has also chosen to fit new faster rocker lines without any tail kick to increase top speed and promote easier, quicker planing.

New rail shapes between the footstraps (i.e. 30-90cm from the tail) have added softness to promote and easier entry into the jibe.

Model	Volume	Length	Width	Tail width	Fin	Finbox	Fin range	Sail range
Carve 111	111	246	66.5	42.6	Drake Freeride Power 38	Tuttle	34-40	5.0-7.5
Carve 121	121	252	72.5	47.0	Drake Freeride Power 42	Tuttle	36-42	5.0-8.0
Carve 131	131	252	75.5	48.7	Drake Freeride Power 46	Tuttle	38-46	5.5-9.0
Carve 141	141	251	79.5	49.9	Drake Freeride Power 48	Tuttle	40-48	6.0-9.5
Carve 151	151	251	81.0	51.5	Drake Freeride Power 50	Tuttle	46-54	6.5-10
Carve 161	161	254	85.0	52.0	Drake Freeride Power 50	Tuttle	46-54	7.0-10

Available in Carbon, Wood and Technora



FUTURA

IMPOSSIBLE ENGINEERING

Photographer: John Carter

WAVE & FREESTYLE

RACING

ATLANTIC

STARBOARD

WindSUP

GETTING STARTED

PREMIUM TEAM
KEVIN PRITCHARD
MULTIMEDIA PRODUCTION



Cut-away shapes
designed to release
more top end speed

Domed decks and inboard/outboard insert
positions allow Futuras to be tuned for
accessibility or maximum performance

Wide outlines for low
speed stability

15% thinner profiles compared to conventional
boards: for a lower CG

Short wide noses improve
aerodynamic efficiency,
reduces swing weight

Very-deep-deck-concaves
improve control and lower the
boards' CG further

Enjoy extra stability at low speeds and class-leading top-end speeds across a mega-wide wind range: the sporty, race-DNA Futuras are for freeriders who want to tune and maximize performance.

The 2014 design includes the very-deep-deck-concave concept, the mini-wingers concept, the C3-designed Venom fins and open-angle cutaways with heel extensions.

New UV protecting blue finish on the carbon models and the new fluorescent livery lifted from the iSonic add to their racing pedigree.

Model	Volume	Length	Width	Tail width	Fin	Finbox	Fin range	Sail range
Futura 93	93	238	61.5	40.6	Drake Venom 36	Tuttle	28-38	4.0-7.0
Futura 101	101	239	65.5	42.7	Drake Venom 38	Tuttle	30-40	4.5-7.5
Futura 111	111	240	69.5	45.9	Drake Venom 42	Tuttle	34-44	5.0-8.0
Futura 121	121	246	72.5	47.8	Drake Venom 44	Tuttle	36-46	5.5-9.0
Futura 131	131	246	76.5	50.1	Drake Venom 48	Tuttle	40-50	6.0-9.5
Futura 141	141	246	80.5	49.9	Drake Venom 50	Tuttle	42-52	6.5-10

Available in Carbon or Wood



DREAM TEAM
BJÖRN and
LIAM DUNKERBECK



DREAM TEAM
BOUJMAA GULLOUL

KODE

TUFKIN

The new 2014 Kode Tufskins: the two-in-one windsurfing board.

A modern, fast and maneuverable freemove board for adults on one hand and a stable, compact entry level boards for kids on the other hand.

The 113 and 123 have thin rails with a hard release edge that gives them an aggressive bite when carving and acceleration that feels sharp and free. The tails have extra float to carry through jibes and extended cut-aways on the bottom improve top end speed and fin grip.

The 137 is the most fun and cruisy board, always in control and stable for all.

All boards have a spiralling Vee bottom shape to combine maximum speed and maximum maneuverability in one. Full EVA decks make them safe and friendly for kids. Multiple insert positions and a centre fin box allows the boards to be set up for the kids' first time, their progressing and finally their advanced windsurfing stages.

Model	Volume	Length	Width	Tail width	Fin	Finbox	Fin range	Sail range
Kode Tufskin 113	113	231	67.5	44.1	Drake Freeride Glide 380 + Drake Shallow 31	2 x Tuttle	26-40	2.0-8.5
Kode Tufskin 123	123	235	71.5	46.3	Drake Freeride Glide 400 + Drake Shallow 31	2 x Tuttle	28-42	2.0-9.0
Kode Tufskin 137	137	246	74.5	47.3	Drake Freeride Glide 420 + Drake Shallow 31	2 x Tuttle	30-44	2.0-9.5

Available in Tufskin

113/123 models: Cut aways are slightly longer for improved fin tracking and increased top end speed.

Tail volume: Increased volume behind the back foot improves float when accelerating.

Deck features: Soft EVA deck for maximum comfort and a carry handle to make handling more convenient.

Outline: The Kode Tufskins are very compact: short and wide. This makes them very stable and maneuverable for kids to learn and progress with. **For adults, this compact shape makes the board maneuverable, fast and fun.**

Dual purpose: Multiple insert positions, fins and fin boxes allows the Kode Tufskins to be set up for beginners, intermediates or experts.

Fin set up for beginners. This set up helps to prevent the board from drifting with the wind during the rider's learning stages.

Fin set up for advanced riders. This set up requires more board speed and skill to prevent drifting, but it makes the board faster and more maneuverable.

Photographer: John Carter

KODE TUFKIN

STARBOARD

WAVE & FREESTYLE

RACING

FREERIDE

WindSUP

GETTING STARTED



GO

ONE FOR ALL

The iconic range of progressive freeriders: the original, comfortable, stable and easy all-round designs that have kick-started the modern era of wide-style windsurfing.

DRAKE TEAM
CONNOR BAXTER
S.P. RACING WORLD CHAMPION

Photographer: JONNY HARRIS

The GO is in our opinion the most complete board in the category that will satisfy the struggling beginner just as much as the planing beginner and the expert. It's a board you'll hang on to for several years, with the outstanding feature of a soft EVA deck that will accommodate those who fall a lot. Another important point is that the board will allow you to rig smaller sails than the other boards in the test group, down to a size of 5.5. The turning radius in a carve can be tight, and the board is more playful than the test group's average, creating a less "guided" feel than the other boards in the group." *PlancheMag Special Test Issue, March/April 2012, France.*

The GO Windsurfer, at 171 litres, is a special daggerboard model with extra length and extra dome for more fun and performance in lightwind conditions.

The GO 151 and 161 include a centre fin-box – perfect for fitting an extra centre fin that makes a beginner's first steps even easier (second fin is optional).

Model	Length	Width	Tail width	Fin	Finbox	Fin range	Sail range
Go 99	93	216	76.3	Drake Freeride Glide 400 + 2 x Drake Shallow 310 + Plugs	Tuttle	34-44	2-7.5
Go 121	121	252	72.0	Drake Freeride Power 400	Tuttle	36-42	5.0-8.0
Go 131	131	252	75.5	Drake Freeride Power 440	Tuttle	38-46	5.5-9.0
Go 141	141	251	79.5	Drake Freeride Power 460	Tuttle	40-48	6.0-9.5
Go 151	151	251	81	Drake Freeride Power 500 + Drake Shallow 410	2 x Tuttle	42-50	6.5-10
Go 161	161	254	85	Drake Freeride Power 500 + Drake Shallow 410	2 x Tuttle	46-54	7.0-10
Go Windsurfer	171	271	85.5	Drake Freeride Power 520 + Drake Shallow 410 + Dagger Board 570	Tuttle	46-54	7.0-10



Cut-away shapes that improve top speed and acceleration

Footstraps positions for every level of sailing: beginner, intermediates and advanced

Thin profiles: control, maneuverability and a sharp, exciting ride

Carry handles in the centre makes carrying the board under-arm easy

Wide outline: low speed stability, large sail and fin carrying capabilities

Full soft EVA deck: comfortable for your feet, knees and elbows. You get lots of grip without the cuts or rashes. The EVA deck is raised high above the edges of the board to allow the water to flow freely around the board and carve jibe smoothly without interruption

WAVE & FREESTYLE

RACING

STARBOARD

WindSUP

GETTING STARTED



DREAM TEAM
anne-marie reichman
WINDSURFING / STAND UP PADDLE / WATER SKIING



www.start-windsurfing.com

GETTING STARTED

WITH WINDSURFING

From windsurfing clubs, schools to your very first board, Starboard offers the most complete and innovative entry-level boards.

- **The new 2014 Rios** have been refreshed with a new deck design, more durable, lighter and easier for windsurfing clubs to maintain. They remain our most popular entry-level boards, helping windsurfers learn and progress from their very first steps to their first carve jibes.
- The ultra-wide **Starts**, the iconic boards that started the whole widestyle revolution in the entry-level segment, are simply the most stable and easiest boards to learn windsurfing on.
- **The Gemini**, our wide and stable tandem board, is not only a super fun social board for skilled windsurfers, it's also a popular teaching and introductory tool for clubs and schools. There's no better way to get newcomers addicted to the sensation of flying on the water than to give them a ride on the front of a Gemini.

Start-Windsurfing.com

Start
Rio
Gemini
ProKids

pXX-pXX
pXX-pXX
pXX-pXX
pXX-pXX
pXX-pXX

Photographer: John Carter

STARBOARD GETTING STARTED

GETTING STARTED

WindSUP

FREERIDE

RACING

WAVE & FREESTYLE



START

START WINDSURFING

The Starts are Starboard's super-stable beginner boards. Feature-packed with smart ideas and offering the widest shape in the entry-level segment, the Starts make learning to windsurf and planing in the straps easier than ever.

The original ultra-wide Start from 1999 was the board that changed windsurfing from a difficult sport to learn into a sport that you could learn in just 60 minutes.

Since the original design, many new features have been added to make the Start the most technologically advanced entry-level board.



OF THE TEAM
ANNE-MARIE REICHMAN
WINDSURFING START UP PALE WATERS

Allgaier daggerboard system more total reliability and durability

The rails are extra thick in the mid-section for added stability



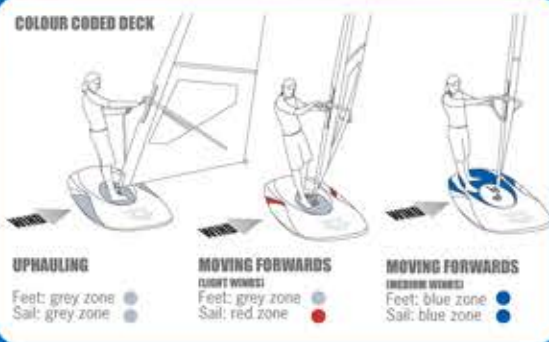
FASTER & MORE GLIDE

The Start M and L are 285cm long to give these ultra-stable boards extra glide and longitudinal traction in lightwinds.

With the longer length, the rockerline of the board can be flattened, which also allows the board to transition very gradually into planing mode – smoothly and easily, without the need to overcome a power surge

Contoured deck shape allows footstraps to remain close to the board's centerline: it's easy to reach

COLOUR CODED DECK



Colour Coded, soft EVA deck helps the user learn correct feet positions and sail positions

The Start's tail design is wider than any other entry-level board. This allows the Start to get planing earlier, at lower speeds and with less power

Lots of deck features make the Starts user-friendly and versatile: there are nose and centre carry handles for convenience, multiple insert positions offer tuning options for entry level/ intermediate/advanced riders and there's also an integrated nose protector to protect the board against nose impacts from the mast

Model	Volume	Length	Width	Tail width	Fin	Finbox	Fin range	Sail range
Start M	238	284	94.5	74.3	Drake Shallow 410 + Daggerboard Allgaier 620	Tuttle 3 holes	31-70	2-9.5
Start L	246	285	100.5	81.1	Drake Shallow 410 + Daggerboard Allgaier 620	Tuttle 3 holes	31-70	2-9.5

Available in Tufskin EVA



RIO

THE EASY CHOICE

Deck handle in the nose for carrying the board and locking it

Long slender shape for a smooth glide when the wind is light

No-EVA in the nose where the boom drags across

White EVA deck pad for easy replacement and maintenance

Carry handle in the centre

Algaier daggerboard system: a proven industry standard

Multiple footstrap positions cater for all levels of windsurfers

Wide outline with a wide tail for stability and early planing.

DREAM TEAM
BOUJIMBA GUILLOUL
ma

Photographer: John Carter

THE

STARBOARD

WAVE & FREESTYLE

RACING

FREERIDE

WindSUP

GETTING STARTED

The new all-round Rios come with a new deck design for 2014. With reduced EVA in the nose where the boom drags across, resistance to wear-and-tear is improved while making the board lighter. In the standing area, soft EVA keeps the board comfortable and grippy throughout an intensive season.

This EVA area is all-white for easy replacement and repair. The new stripe graphics are painted not sickered, also for more wear-and-tear resistance and easy maintenance.

Tufskin ArmourTech models offer maximum impact resistance by using twice the layer of 3D glass laminate and adding an outer shell of ASA skin both deck and bottom. Tufskin ArmourTech is recommended for windsurfing schools and clubs.

The regular Tufskin Rio is lighter and our recommended option for a windsurfer's first board or an all-round family board. The Rio is adapted and designed for learning, progressing from basic maneuvers to getting planing smoothly and easily.

The easy choice.



Deck Contour design makes windsurfing in the footstraps easier than ever

Rio XL

The Rio XL is the extra long model, developed for schools that prefer longer shapes for the most glide and longitudinal traction. At 82.5cm wide, it remains a stable platform for beginners to learn and progress.

It is a school-only board, available only in ArmourTech and is finished all-white to make repairs and maintenance easy. The deck is finished in conventional non-slip.

Model	Volume	Length	Width	Tail width	Fin	Finbox	Fin range	Sail range
Rio S	180	269	76	56.2	Drake Shallow 310 + Daggerboard Algaier 620	Tuttle	31-41	2-9.5
Rio M	206	289	81.5	59	Drake Shallow 410 + Daggerboard Algaier 620	Tuttle	31-41	2-9.5
Rio L	233	300	85.5	67.5	Drake Shallow 410 + Daggerboard Algaier 620	Tuttle	31-41	2-9.5
Rio XL	266	336	82.5	48.1	Drake Shallow FRN 220 + Daggerboard Algaier 620	US 8"	-	2-9.5

Available in Tufskin & ArmourTech. Rio XL available in ArmourTech only



GEMINI

TANDEM WINDSURFING

"You have to try the Gemini at least once in your lifetime".

The experience of windsurfing in tandem, to share the thrill of planing with a new windsurfer or to see how fast you can go partnered with another advanced windsurfer, is unique. With the Gemini Mk II, it's never been easier or felt more natural. A classic and an original Jim Drake design.

Photographers: John Carter

WAVE & FREESTYLE

RACING

STARBOARD

FREERIDE

WINDSUP

GETTING STARTED



DREAM TEAM
DANY BRUCH
STARBOARD RACING

DREAM TEAM
IBALLA MORENO
2012 PWA WAVE CHAMPION

STARBOARD



Deck Contour Design: enjoy the perfect grip under your feet and feel right at home. The Gemini's deck shape is designed to feel and ride just as if you were riding your solo freeride board.

Forward Daggerboard position: The daggerboard is operated by the front rider. It is positioned far forward in the board, improving the leverage the daggerboard has to track you upwind.

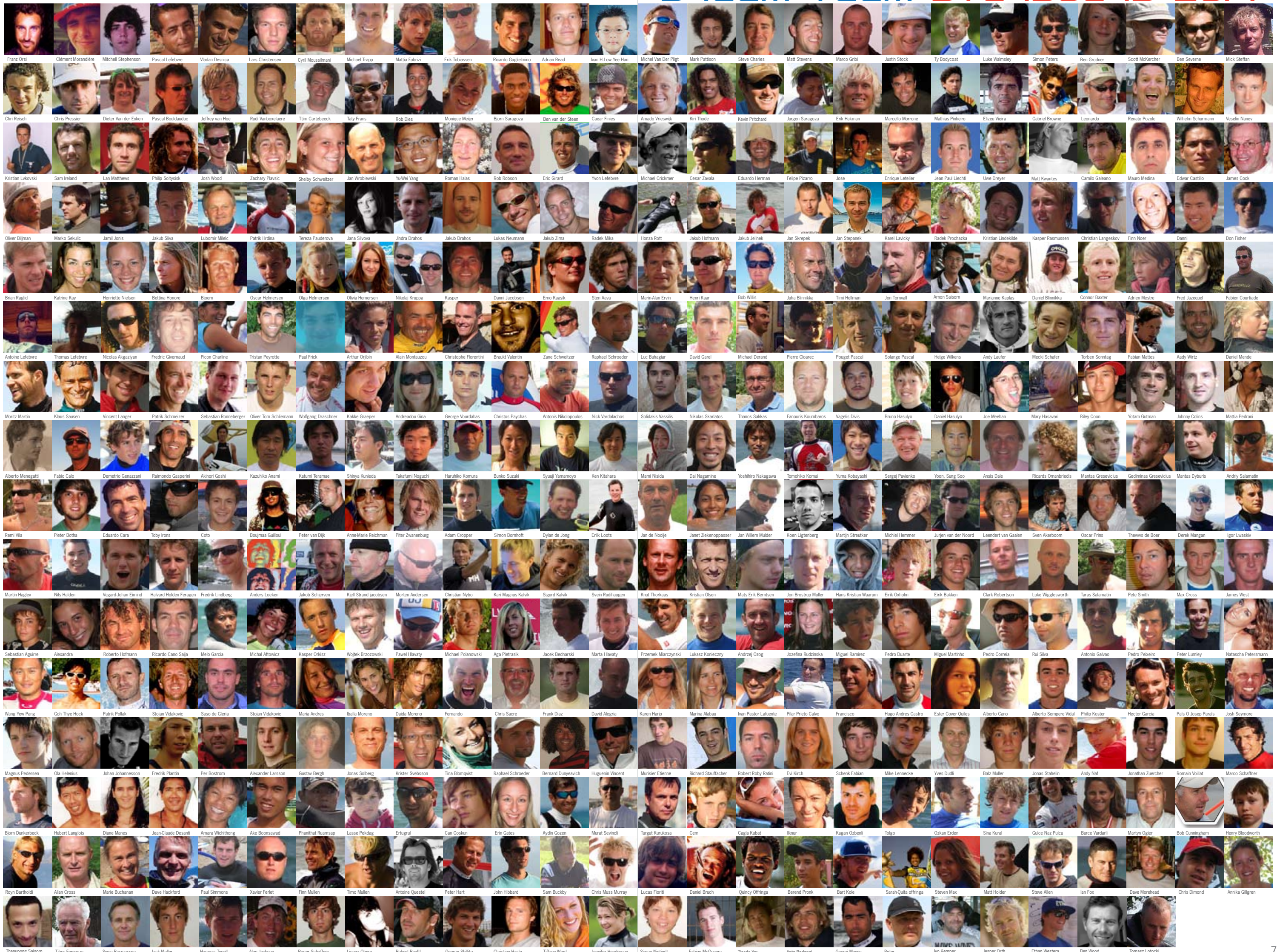


Extra long shape Benefit 1: allows the rocker to be stretched out for an ultra long flat profile. The Gemini Mk II gets planing easily, earlier and with less effort.

Benefit 2: there is more space between the sails. You can tack and jibe more easily without the two sails interfering with each other.

Model	Volume	Length	Width	Tail width	Fin	Finbox	Fin range	Sail range
Gemini Mark II	384	399	100.5	87.2	Drake R13 Race 700 NR + Daggerboard Algaier 62	Deep Tuttle+Algaier	40-70	3.5-11
Available in Tufskin								

DREAM TEAM STARBOARD 2014





DREAM TEAM
DANY BRUCH
STARBOARD R&D



atomia : the new slim shapes for the widest wind range, covering the typical wind-range of two to three classical freeride boards.

Plane early like a board with 15 liters of extra volume, as maneuverable and controllable as a board with 15 liters less. "Plane big, jibe small".

1 The original pioneering slim freeride board, first introduced in 2010.

2 5mm Sponge layer under the standard grooved 6mm EVA layer, optimising comfort normally hard to achieve with thin profiles.

3 Aggressively hard-edged and very thin rails: jibe with grip and power. The Atomia invites the rider to carve harder and faster into the turns each time.

4 Very wide outline: the plane early, track upwind with power and fly through lulls. Very compact with thin profiles: shed excessive mass and minimize swing weight. With the right tuning, they offer an extraordinary wind range.

5 iSonic 110 rockerline + thin hard rails = sporty and aggressive character.